

Data Linkage

Preliminary Report

Linkage Completed

Linkage Completed by:

1

Preliminary Report Completed

Preliminary Report Completed by:

Data Set Used: Enrollment Information

Summary:

On September

and

from the

Health Services

assignees from the Centers for Disease Control and Prevention, and

Department of Community Health were welcomed into

Health Center by Health Director

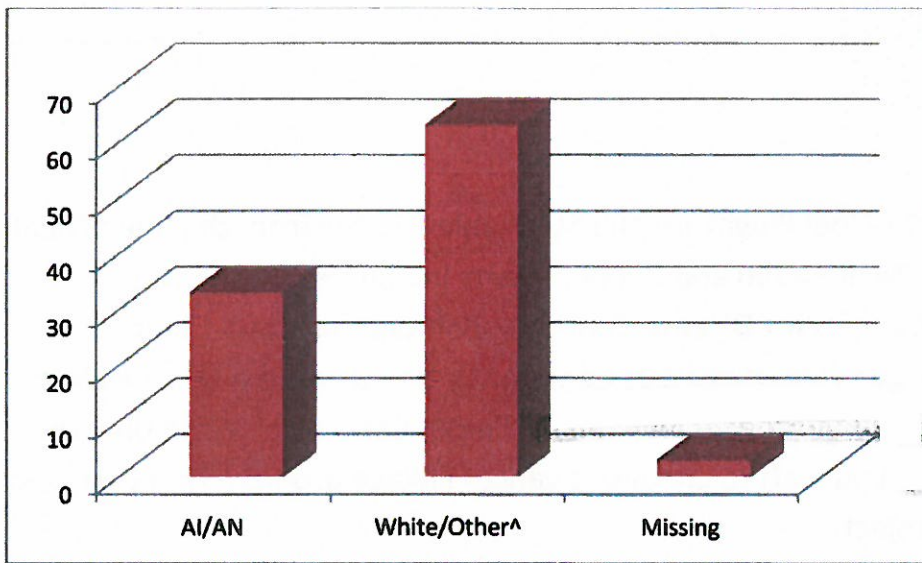
and staff to conduct a cancer linkage project. There are two main goals of this project:

- To provide Tribal accurate Tribal specific data that may be used for program planning; surveillance and to secure funding opportunities to strengthen services provided to members
- To correct the State Cancer Registry so that Native Americans are accurately counted, to assist with surveillance and cancer program funding for the Tribal population

This is a preliminary report and will be followed by a presentation of the final detailed report. We thank you for helping us improve our care to Tribes.

Total Cancer Cases from

Graph 1 : Percent of Cancer Cases by Race: American Indian/Alaska Native 33% , Other 63% and Missing 3%* (Total Cases=)

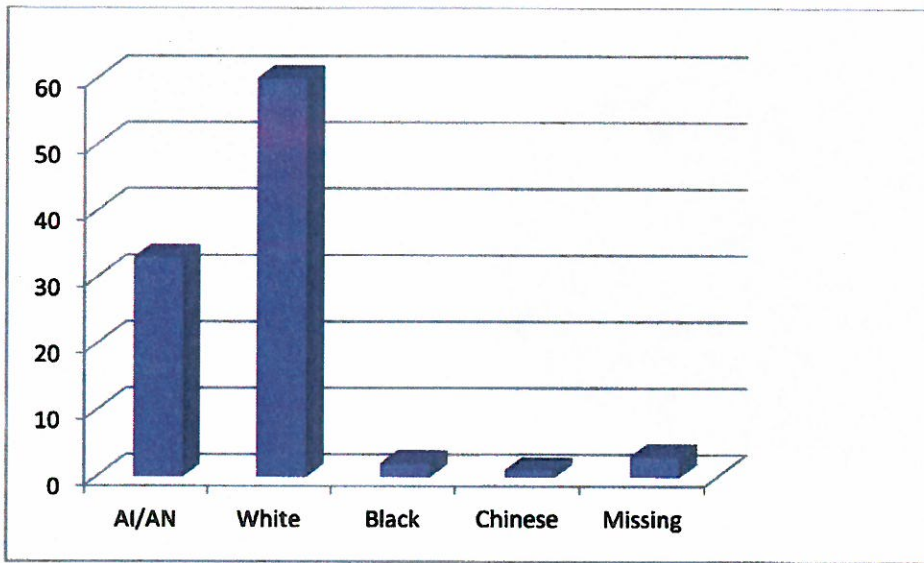


*Due to rounding numbers may not add to 100

^White, African American, and Chinese

Graph 1 shows the percent of cancer cases that were misclassified in the SEER Registry. Only 33% or 90 cases out of [redacted] were accurately identified as American Indians/Alaska Native. This has great implications for funding. This information may be helpful for program planning or securing funding for prevention programs.

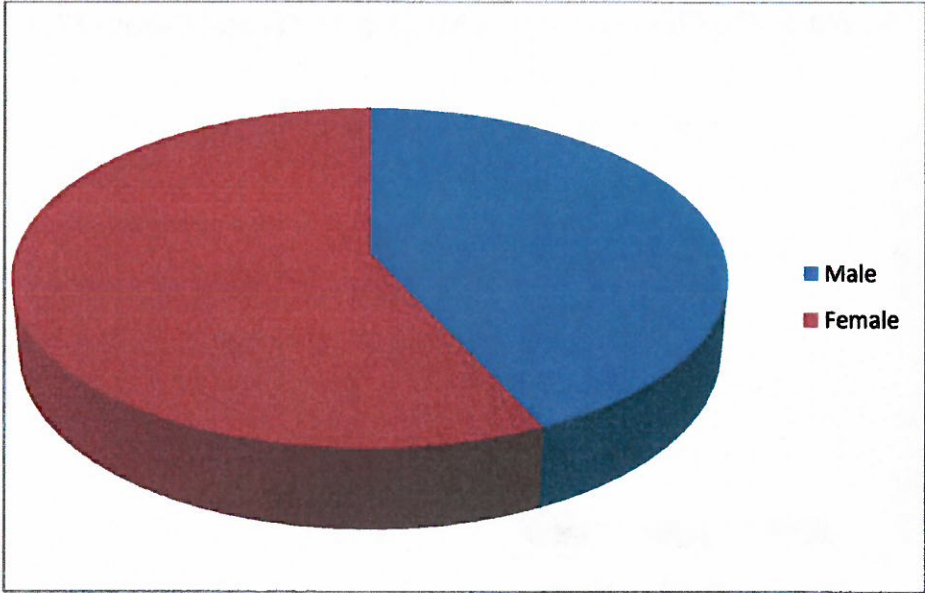
Graph 2: Percent of Cancer Cases by Race: American Indian/Alaska Native 33%, White 60%, Black 2%, Chinese 1% and Missing 3%*(Total Cases=



*Due to rounding numbers may not add to 100

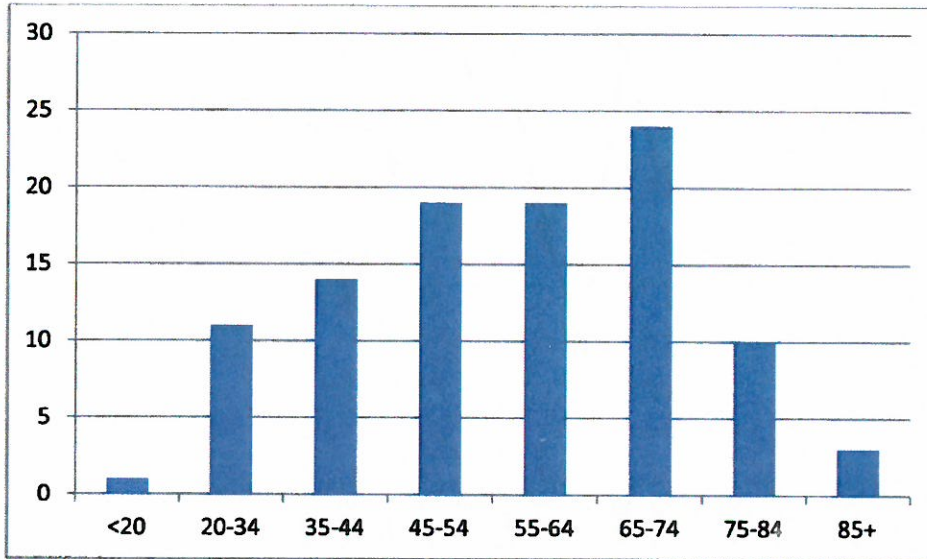
Graph 2: Is a more detailed version of the Graph 1, it shows the breakdown of races that were reported in the Cancer cases.

Graph 3: Percent of Cancer Cases by Gender: Male 43% and Female 57% (Total Cases=)



Graph 3 illustrates the difference in Cancer Cases by Gender Male 43% (cases), Female 57% (cases). The final report will show more detail by looking at cancer types by gender, year of diagnoses by gender, and cancer types by year and gender.

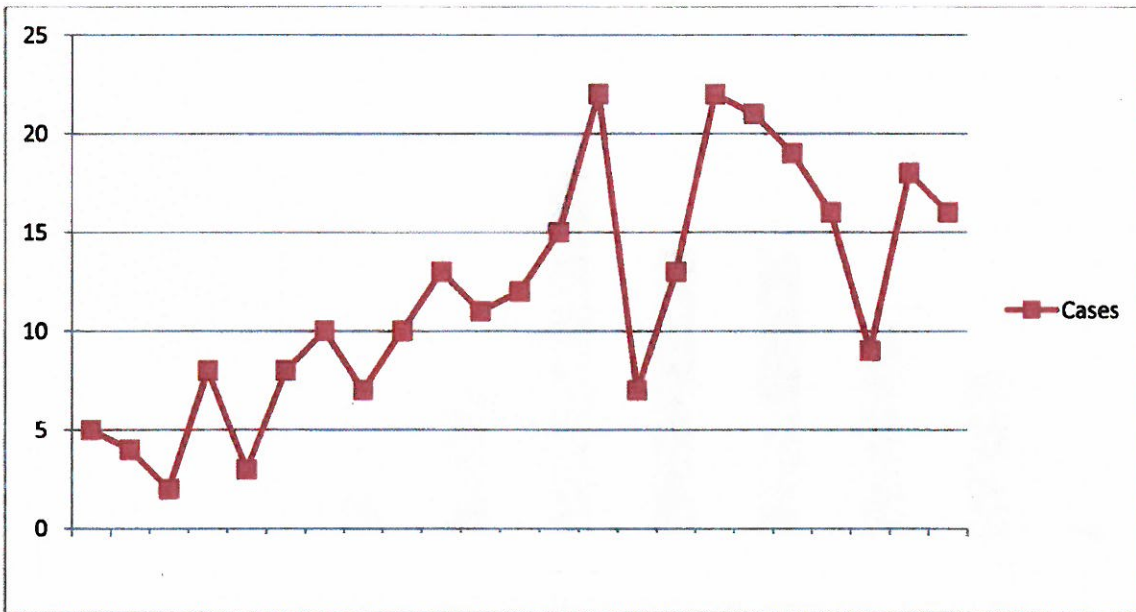
Graph 4: Percent of Cancer Cases by Age Group: <20 1%, 20-34 14%, 35-44 11%, 45-54 19%, 55-64 24%, 65-74 10%, 75-84 19%, 85+ 3% (Total Cases= .)



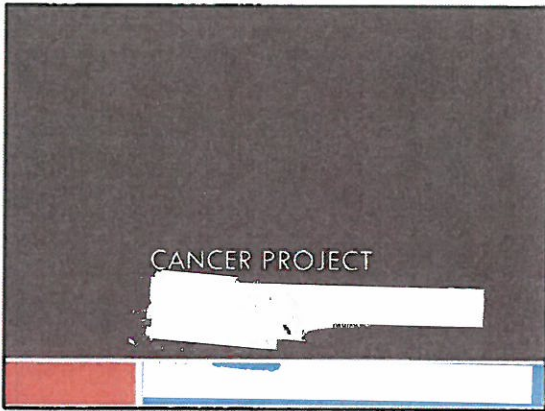
Graph 4 shows the breakdown of cancer cases by age group. This information in addition to cancer type by gender and year of diagnoses can be very helpful in planning prevention programs. This preliminary report does not include all of this useful information, however, the final report will.

Graph 5: Number of Cancer Cases by Year from

(Total Cases=



Graph 5 illustrates the number of diagnosed cancer cases by year from 1980 to 2002. The years with the most diagnosed cancer cases were 1993 and 1996 both with 22 cases. The year with the least is 1982 with 2 cases. This information alone is important, however, looking at enrollment data by year, types of cancers diagnosed by year, and at any screening programs that may have existed at these times may provide a better picture.



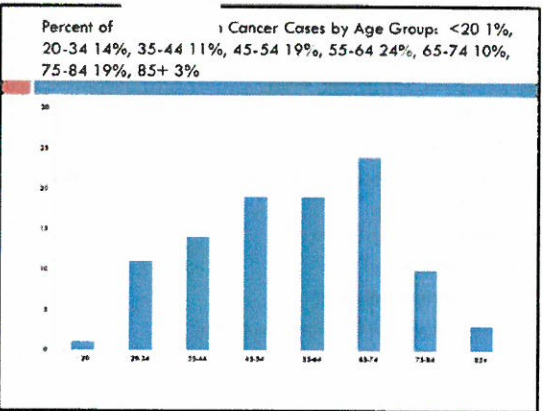
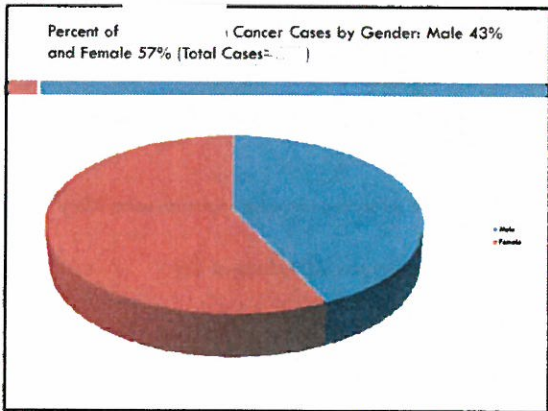
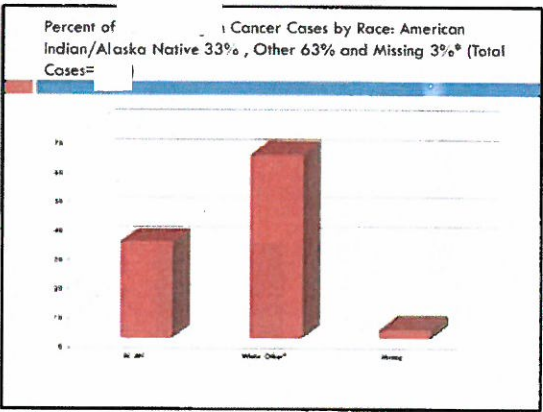
Project Goals

- ❑ To help broaden our understanding of cancer in our Tribal Communities
- ❑ To inform community members and health professionals about cancer
- ❑ To improve cancer prevention, education and treatment

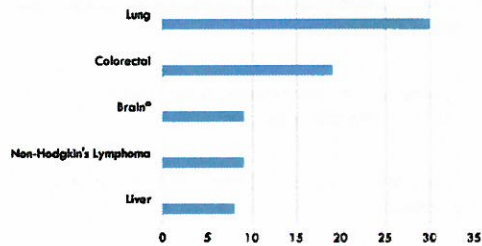
Top Causes of Death

- ❑ Heart Disease
- ❑ Cancer
- ❑ Unintentional injuries
- ❑ Diabetes
- ❑ Chronic liver disease and cirrhosis

<http://www.cdc.gov/omhd/populations/alan/alan.html#ten>

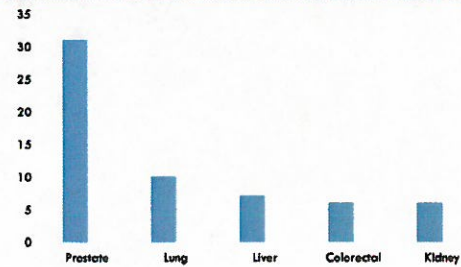


Most Commonly Diagnosed Cancers

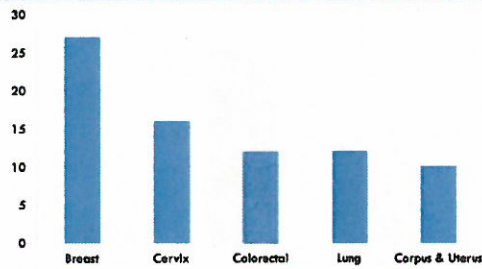


*Brain and other nervous system

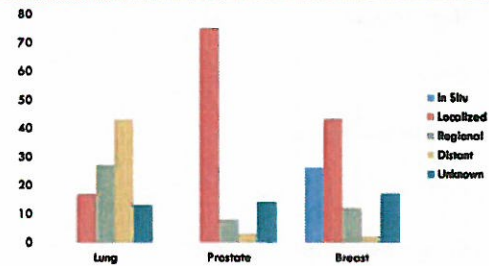
Most Commonly Diagnosed Cancers-Males



Most Commonly Diagnosed Cancers-Female



Cancer Stages



7 Ways to Prevent Cancer-Mayo Clinic

- Don't use commercial tobacco
- Eat a healthy diet
- Maintain a healthy weight/include physical activity daily
- Protect yourself from sun
- Get immunized
- Avoid risky behavior
- Self exams/professional screening

What Can We Do?

- Promote a healthy lifestyle-Use 5 A's or other Brief Interventions
- Encourage screening-develop registries using iCare
- Educate community-ACS Circle of Life