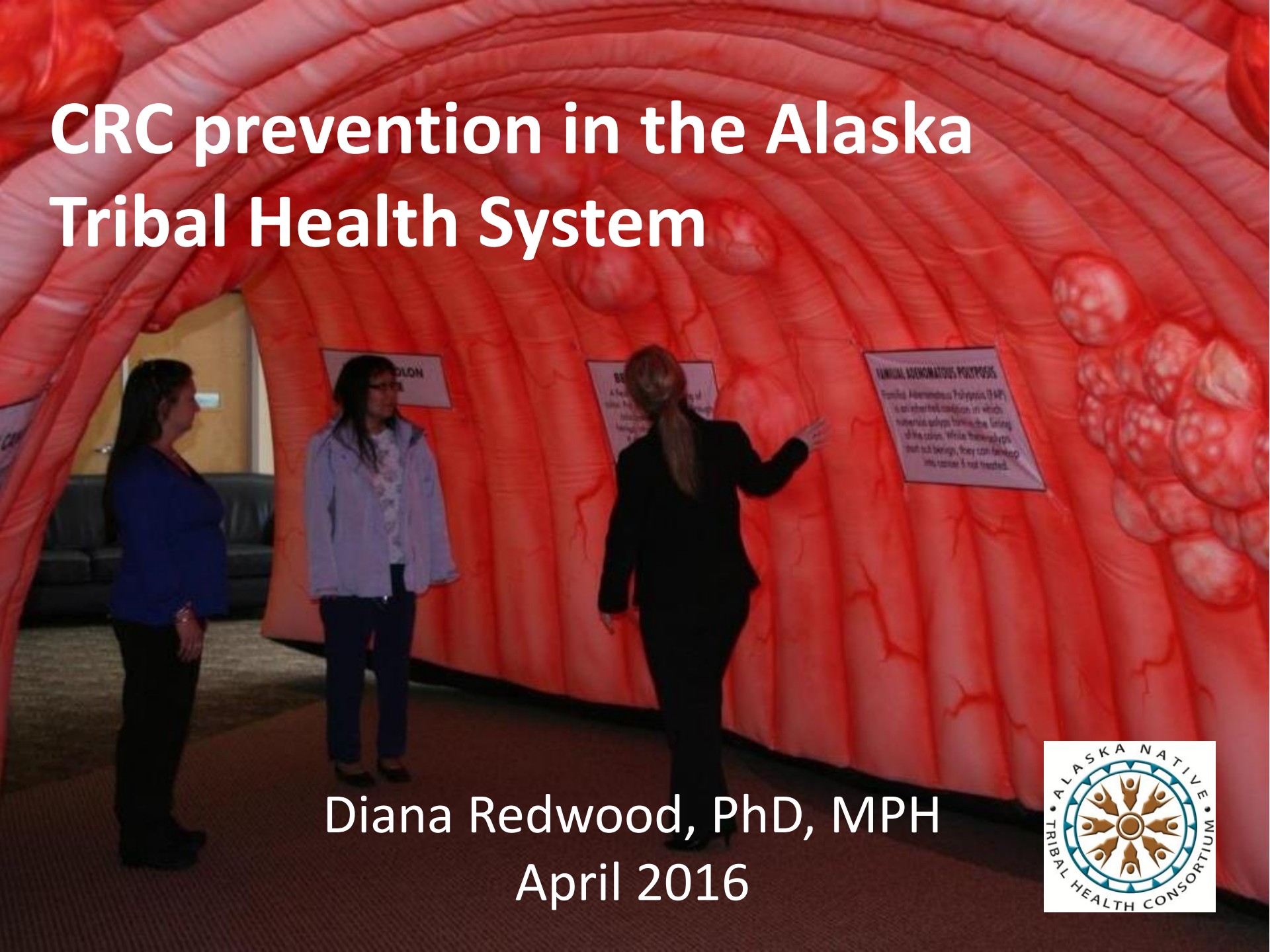


CRC prevention in the Alaska Tribal Health System

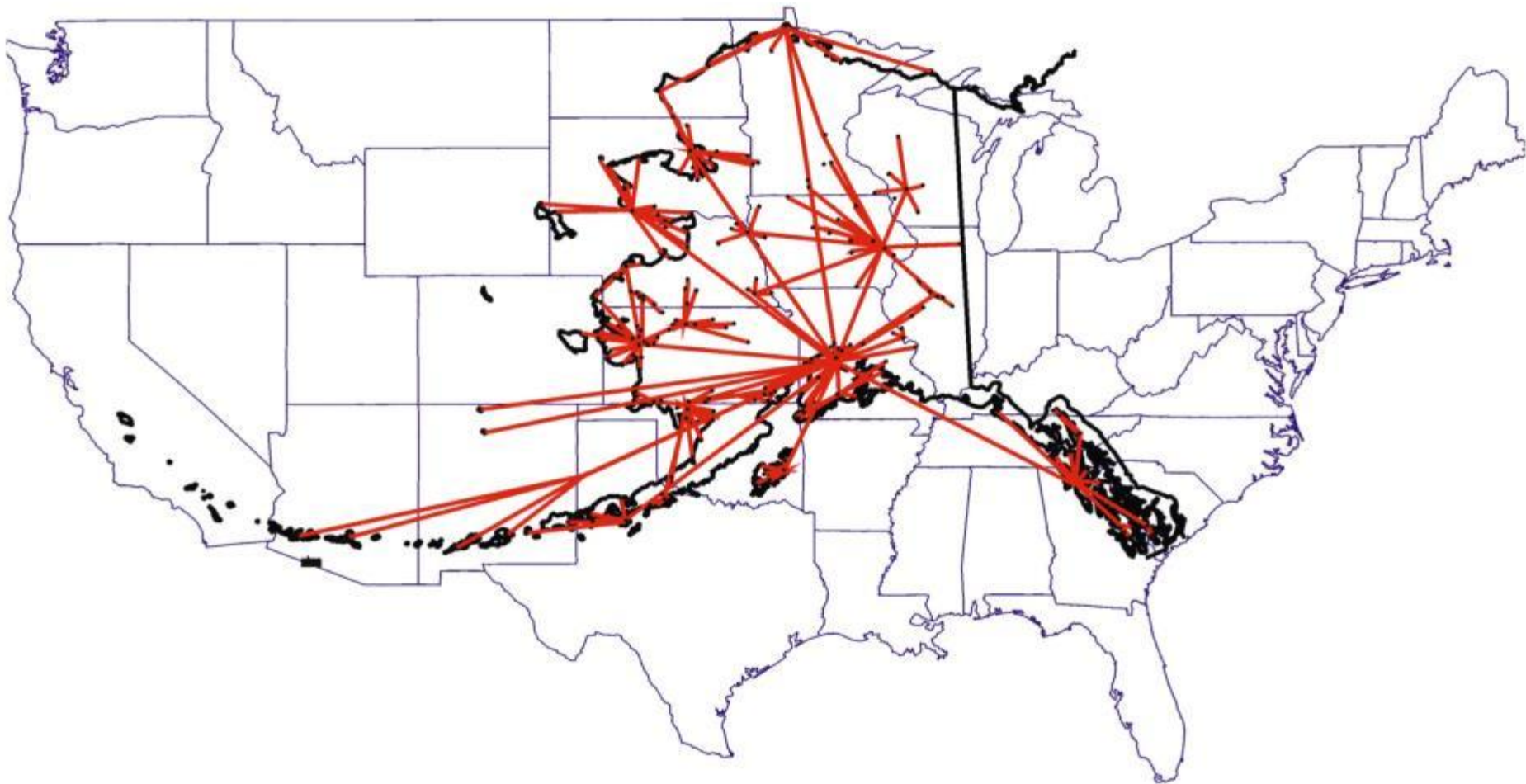


Diana Redwood, PhD, MPH
April 2016



THE ALASKA NATIVE HEALTH CARE SYSTEM REFERRAL PATTERN

Same Scale Comparison - Alaska Area to Lower 48 States



Traditional territories of Alaska Native Cultures

Inupiaq &
St. Lawrence Island Yupik



Yup'ik & Cup'ik



Unangaꝯ & Alutiiq (Sugpiaq)



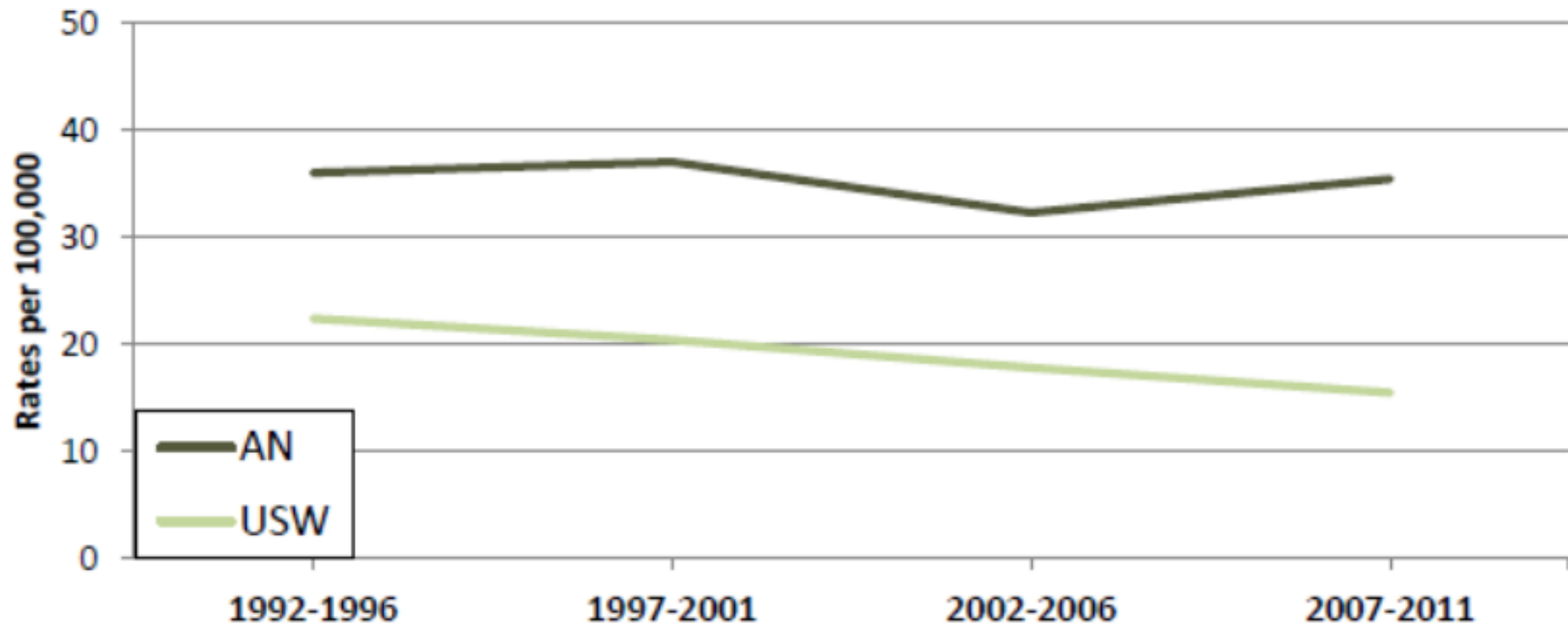
Athabascan



Eyak,
Haida
Tsimshian
Tlingit



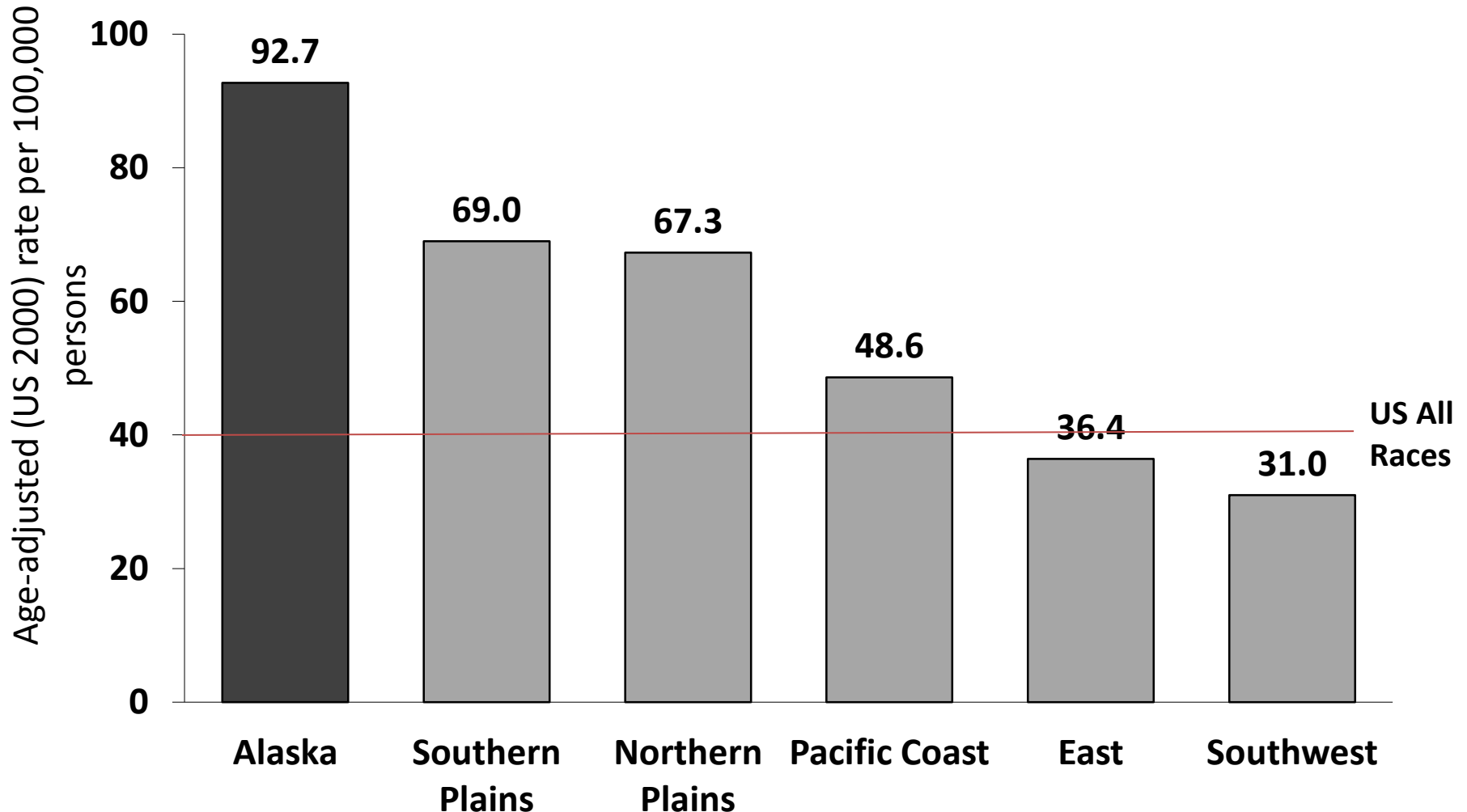
Colorectal Cancer Mortality Rates Alaska Native and US White, Men and Women, 1992-2011



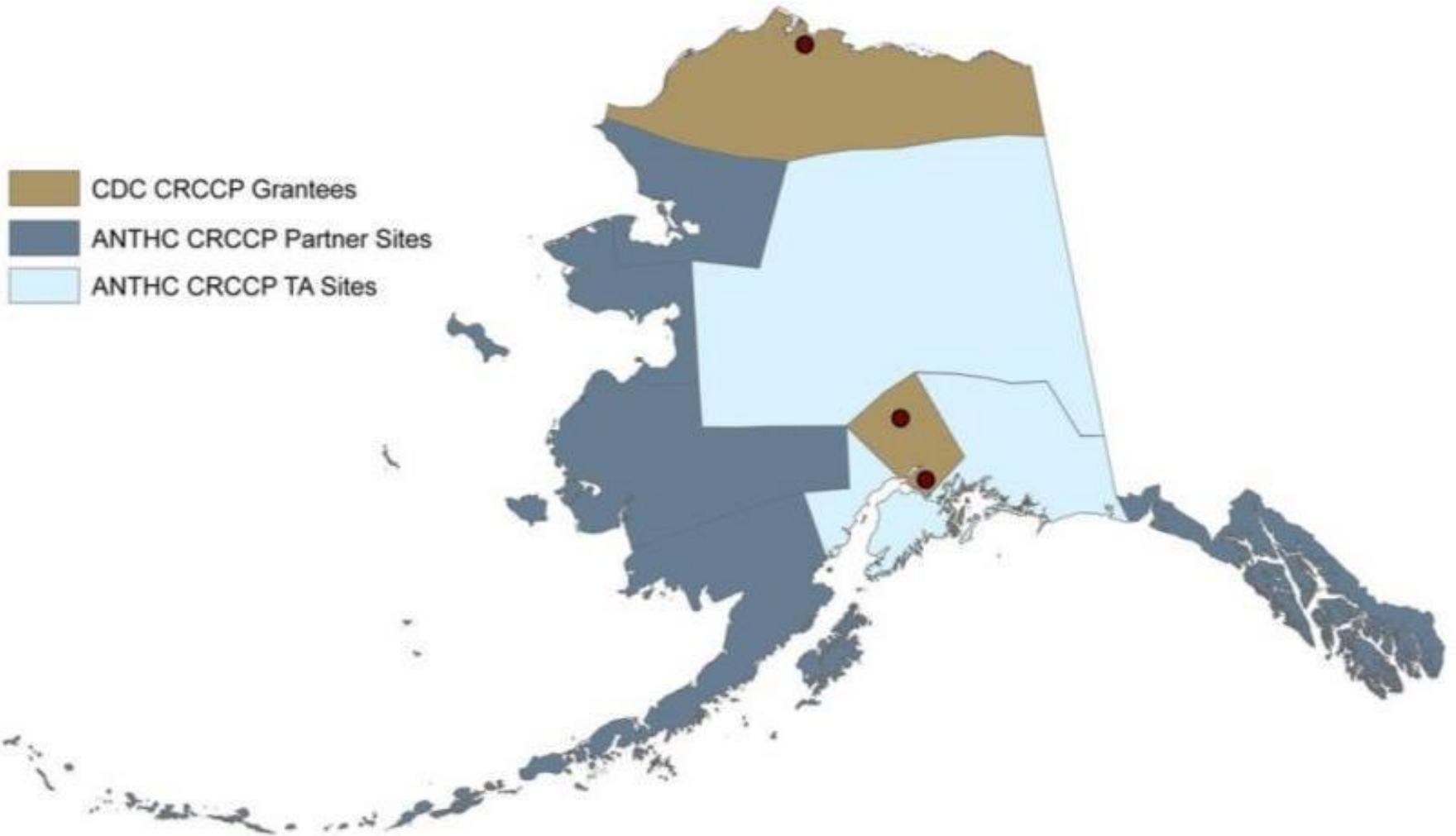
Colorectal Cancer Incidence Rates: Alaska Native and US White, Men and Women, 1969-2013



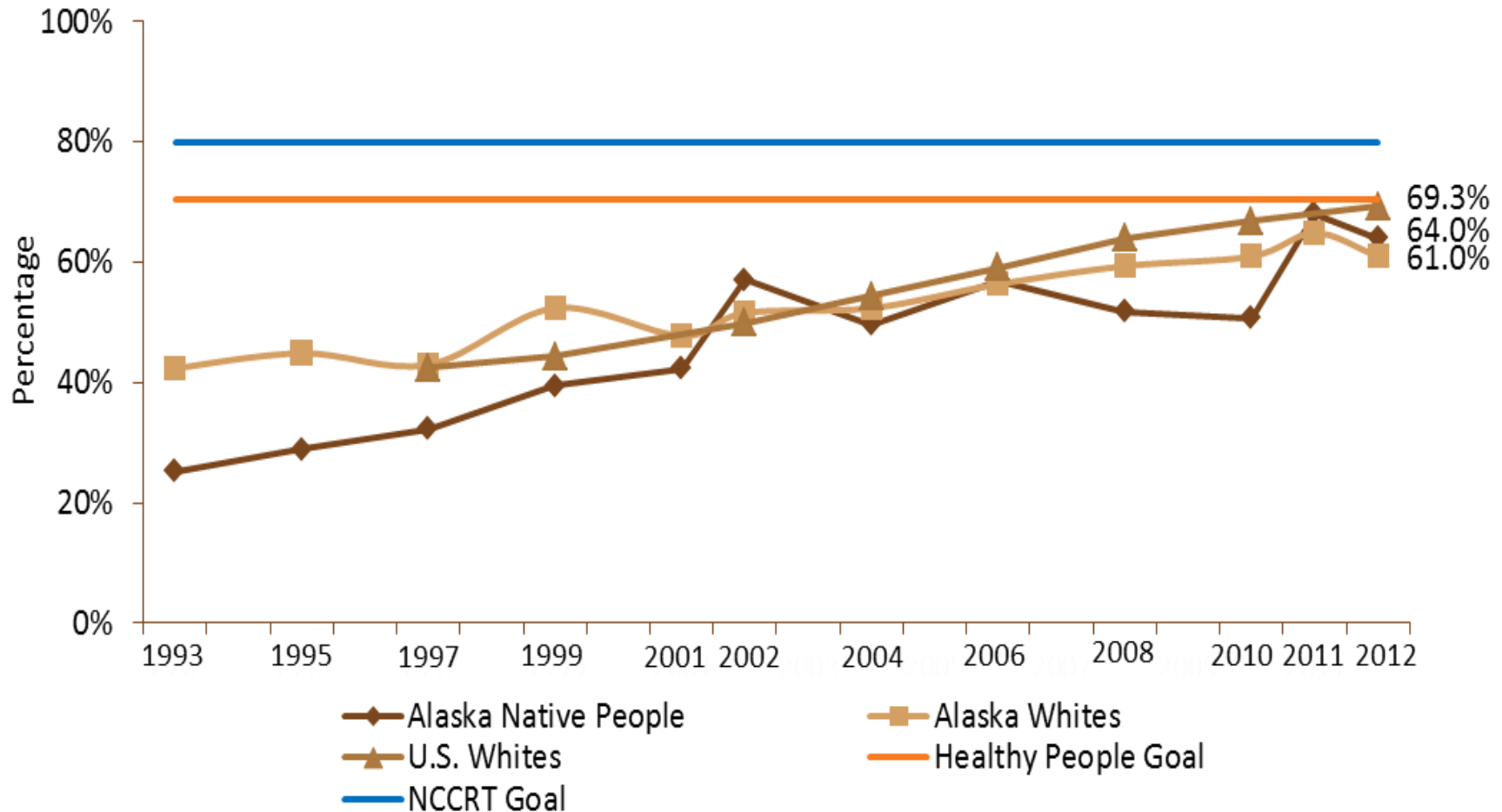
Colorectal cancer incidence rates, AI/AN and NHW, both sexes, 2005-2009, CHSDA counties



Alaska CRC Control Programs, 2009-2015

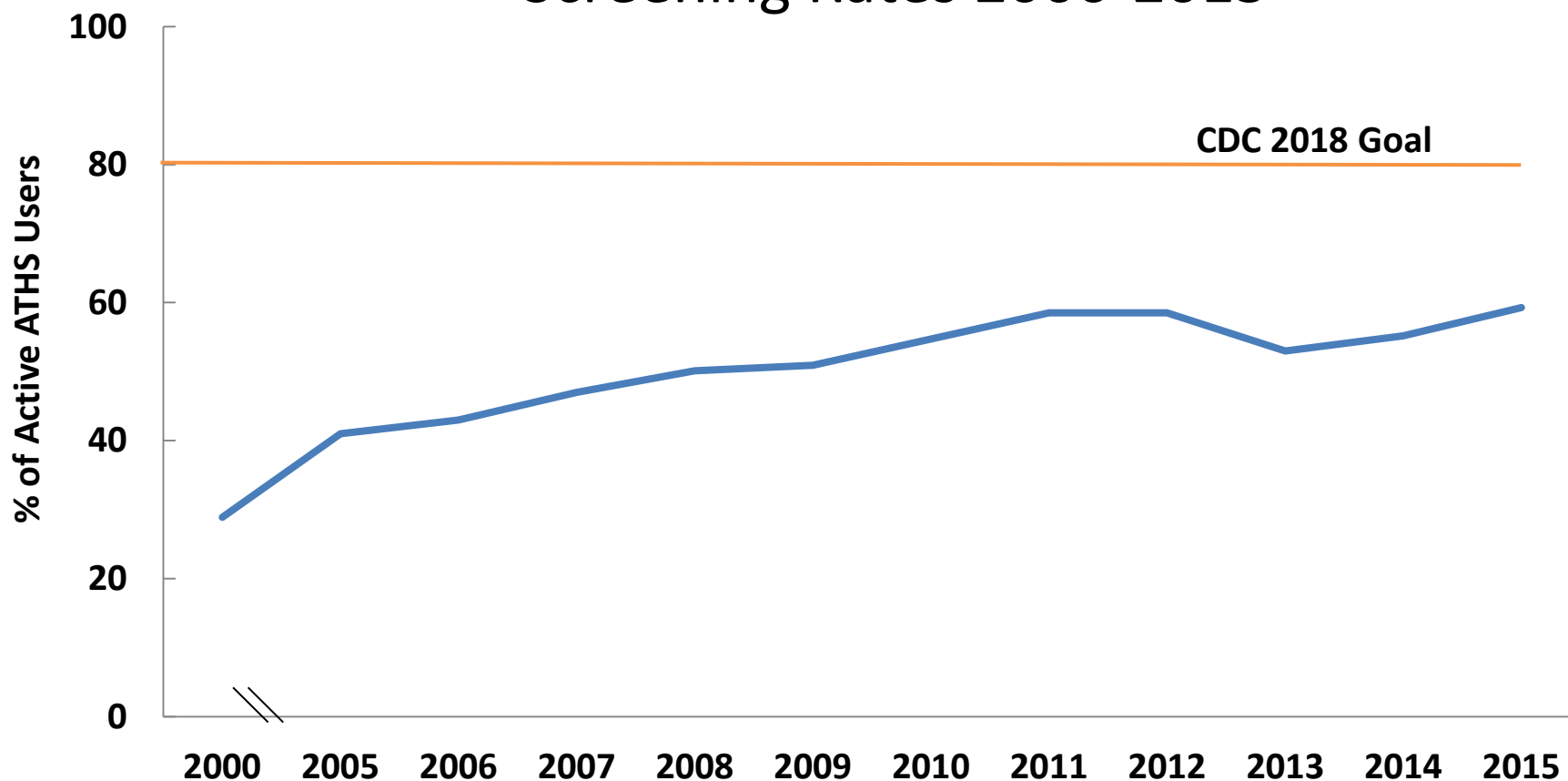


Colorectal Cancer Screening, Adults (50+ Years), BRFSS 1993-2012



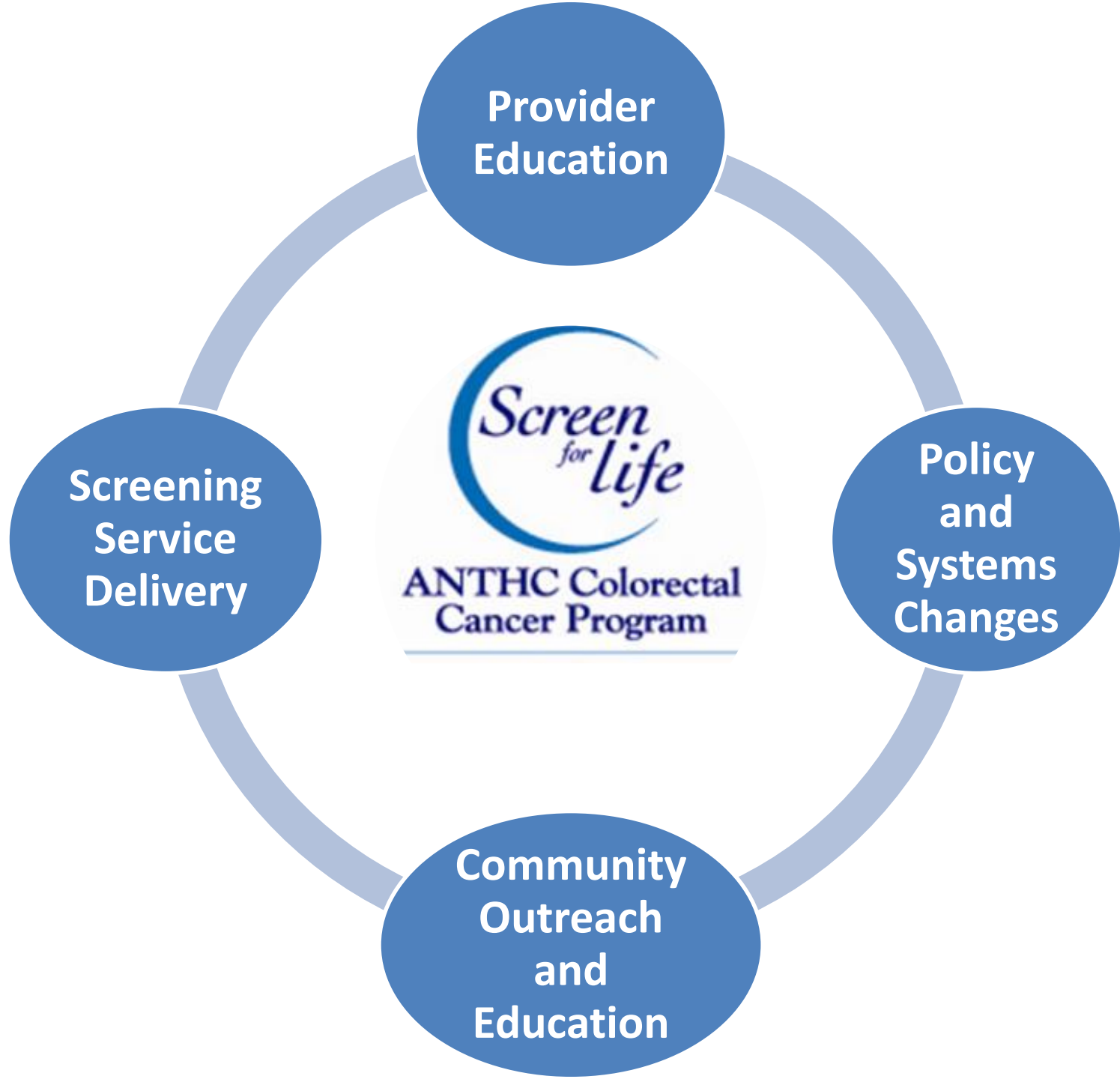
Data Sources: State of Alaska, Division of Public Health, Behavioral Risk Factor Surveillance System; Centers for Disease Control and Prevention, Behavioral Risk Factor Surveillance System
 Note: Data presented are for flexible sigmoidoscopy or colonoscopy ever

Alaska Tribal Health System Colorectal Cancer Screening Rates 2000-2015



Note: The GPRA denominator changed in 2013 to 50-75 year olds from 51-80 year olds.

Data Source: GPRA Data, Active Users



*tools to create public
health materials*



Health Literacy Workshop

with
Dr. Barry
Weiss

Register now
to reserve
your space!

May 13-14, 2013

Click here for details

www.anthctoday.org/epicenter/healthlitworkshop.html



sponsored by:
ALASKA NATIVE
EPIDEMIOLOGY
CENTER

www.anthctoday.org/epicenter

CRC Screening Patient Navigators & First Degree Relative Outreach



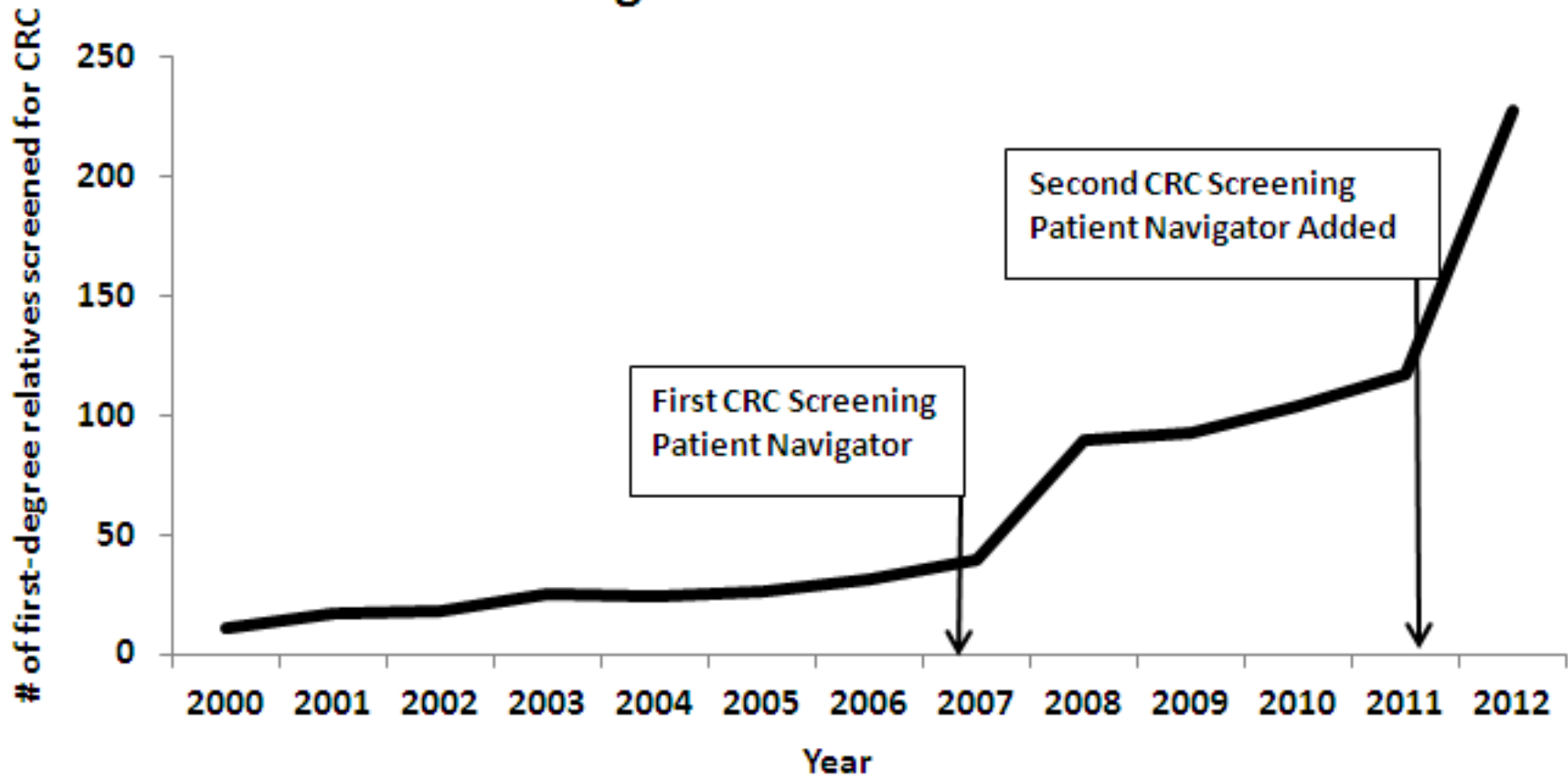


Photo Source: BBAHC CRC Control Program

**ANTHC Alaska Native
Colorectal Cancer
Family Outreach
Program**



Increase in first-degree relatives screened over time





**Getting Ready for Your
Colonoscopy: A How-To-Video**
(5:04)

**Steve Gets Ready for his
Colonoscopy**
(4:39)

Awakening Choices
(6:45)

**Getting Ready for Your
Sigmoidoscopy**
(4:22)

**Margaret Gets Ready for her
Sigmoidoscopy**
(4:29)

Love Your Colon
:30 TV PSA

"Words of Wisdom"
:30 TV PSA
2 Versions



50?

Then it's time
to get screened
for colon cancer.
Everyone 50 and
older should do it.



**Just a
quick reminder**

It's time for your
colon cancer screening.

Colorectal cancer...

...detectable and even preventable.



WHAT'S THE BIG DEAL?

Film produced by the Arctic Slope Native Association

location:

time:

BAKER JENNINGS FILMS PRESENTS IN ASSOCIATION WITH ARCTIC SLOPE NATIVE ASSOCIATION CREATIVE DIRECTOR
MELANY CUEVA SCRIPT BY P. SHANE MITCHELL ORIGINAL MUSIC BY KURT RIEMANN, SURREAL STUDIOS
EDITED BY TOM ANDERSON EXECUTIVE PRODUCER JOZIETA SLATTON
PRODUCED/DIRECTED BY BILL BAKER AND PAMELA JENNINGS



http://www.anthc.org/chs/epicenter/colorectal_cancerprogram.cfm

Supported by Grant Number 5U88PW00047-02 from the Centers for Disease Control and Prevention (CDC). Its contents are solely the responsibility of the authors and do not necessarily represent the official views of the CDC.

www.alaskacolnhealth.org

I GOT SCREENED.

Now, I'm talking about it.

I GOT SCREENED.

Now, I'm talking about it.

I GOT SCREENED.

Now, I'm talking about it.

I GOT SCREENED.

Now, I'm talking about it.

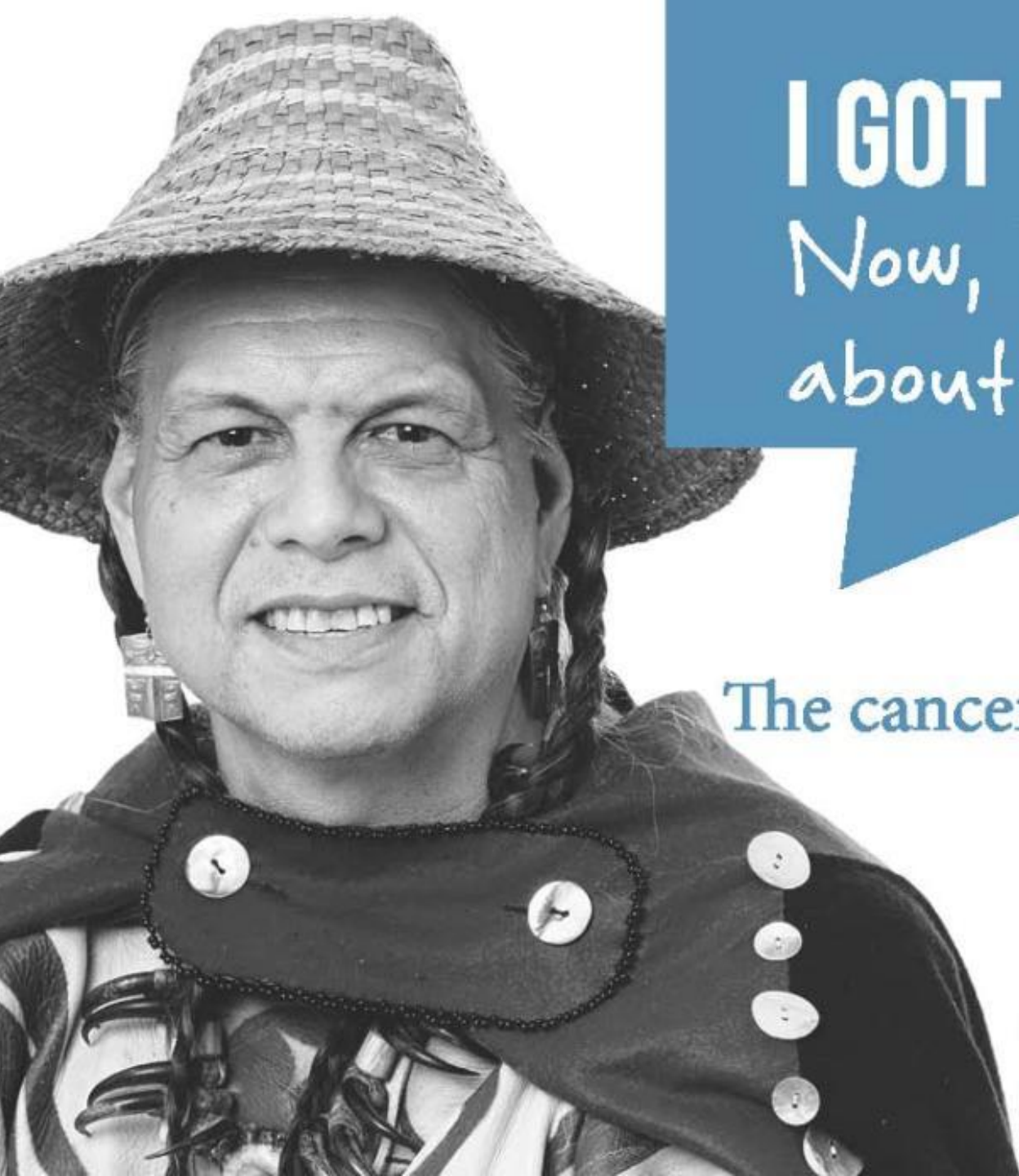
I GOT SCREENED.

Now, I'm talking about it.

I GOT SCREENED.

Now, I'm talking about it.





I GOT SCREENED.

Now, I'm talking
about it.



The cancer ~~you~~ ^I can prevent.

Colorectal Cancer
alaskacoloonhealth.org

David Baines, M.D.
Tsimshian and Tlingit Tribal Elder

BENIGN POLYPS

A fleshy growth in the lining of colon. Polyps are discovered through colonoscopies and most are benign (non-cancerous) however if not removed, a polyp can develop into colorectal cancer.

FAMILIAL ADENOMATOUS POLYPOSIS

Familial Adenomatous Polyposis (FAP) is an inherited condition in which numerous polyps form in the lining of colon. While these polyps are benign, they can develop into cancer if not treated.



03/11/201

Photo courtesy of BBAHC CRC Control Program



just... **HEY YOU!!**

Who Me? **YES YOU!**
Did you know that colon cancer is twice as common in Alaska Native people than in US White people?

No WAY! Why?
We don't know all the reasons, but we do know that if Alaska Native people get screened for colon cancer, it can be found early and even be prevented.

But it's never happening!
Yes, it can feel that way, but colon screening can save your life. You can set an example for your family and maybe help save their lives too.

So what do I need to do? **GREAT QUESTION!**
Most important, **GET SCREENED** at age 50 or earlier if you have a family member who had colon cancer. You can also reduce your risk of cancer if you may inherit real health, and avoid tobacco.

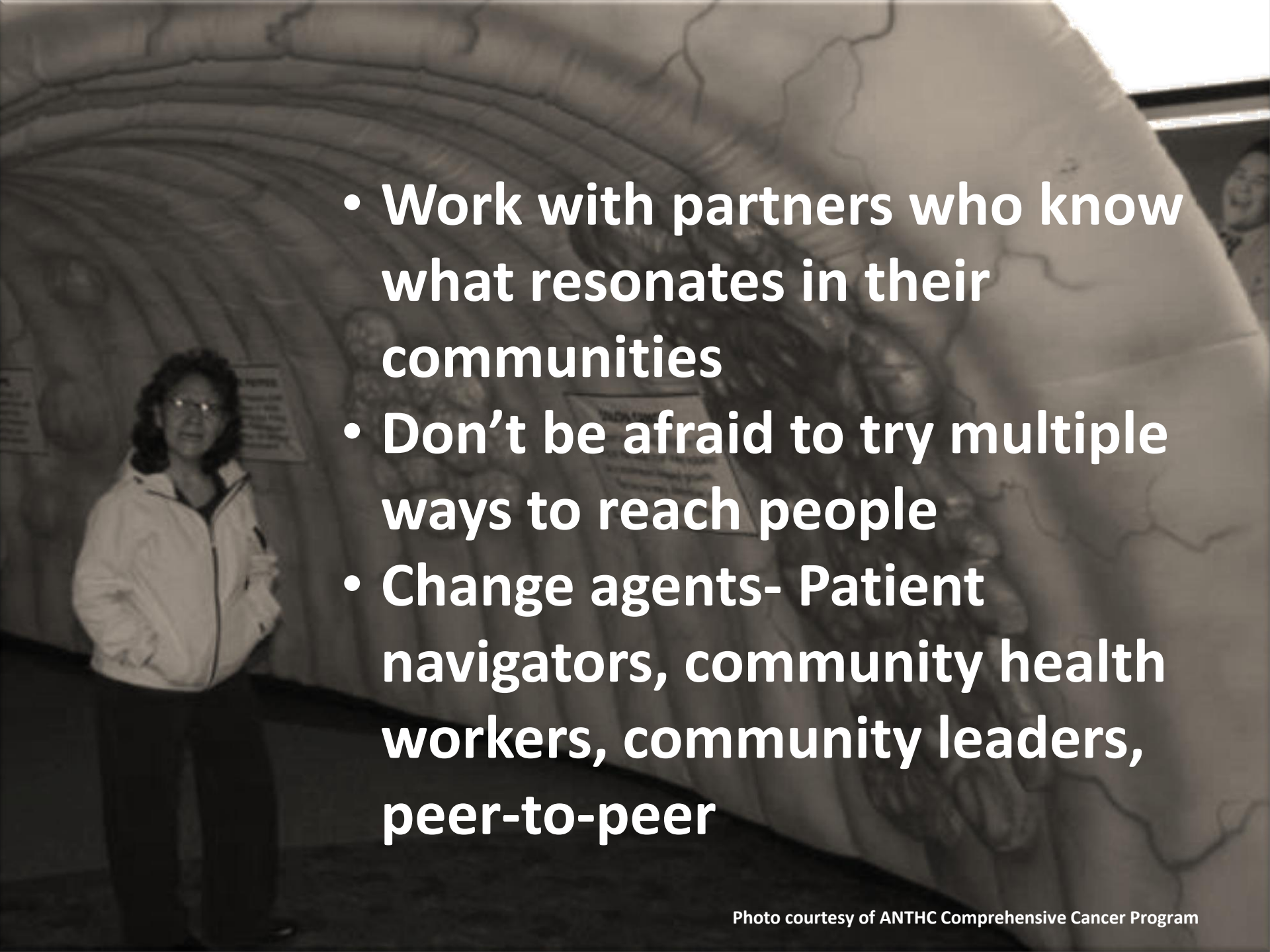
and OK! **TERRIFIC!**
I'll talk to my health care provider about it. **Prevent Colon Cancer GET SCREENED!**
Do it for yourself. Do it for your family!



Photo courtesy of Norton Sound Health Corporation CRC Control Program

Systems & EHR Changes

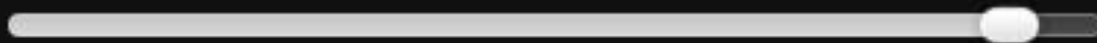


- 
- A woman with glasses and a white jacket stands in front of a large mural depicting a diverse community of people. The mural is rendered in a dark, textured style, possibly woodcut or linocut. The woman is positioned on the left side of the frame, looking towards the camera. The background is a large, curved wall covered in the mural. The overall tone is professional and community-oriented.
- **Work with partners who know what resonates in their communities**
 - **Don't be afraid to try multiple ways to reach people**
 - **Change agents- Patient navigators, community health workers, community leaders, peer-to-peer**

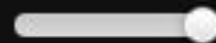
Colon screening can prevent cancer

See your provider today

I
The cancer ~~you~~ can prevent. alaskacolonealth.org



0:31



<http://alaskacolonealth.org/assets/TheCancerICanPrevent.mp4>



ALASKA NATIVE
EPIDEMIOLOGY
CENTER

Diana Redwood, Senior Epidemiologist
TEL: 907-729-3959 EMAIL: dredwood@anthc.org

Colorectal cancer mortality rates, AI/AN and NHW, both sexes, 2005-2009, CHSDA counties

