



***Looking Back and Looking Ahead:
Collaborating to Advance Cancer Control in
American Indian/Alaska Native Communities***

Continuing Momentum Beyond the Summit

April 26-28, 2016
Traverse City, Michigan

Lisa C. Richardson, MD, MPH

Director, Division of Cancer Prevention and Control,
Centers for Disease Control and Prevention

The Gang is All Here



Special Thank You to Nina Miller





Good Health and Wellness in Indian Country

www.alaskacolhealth.org

Regional patterns

Equity NOT Equality

Racial Misclassification

DATA

Hide Tobacco
OK2SHARE

Mortality Incidence Ratio

Cancer Health Disparities

Sustainability Be Flexible

Show Data to Make the Point
HEALTH IN ALL PLACES REAL RATES

Competing

Storytelling

Nolan the Colon

MIYO

Begin with the end in Mind

GROUND BREAKING REPORTS
CLINICAL-COMMUNITY LINKAGES

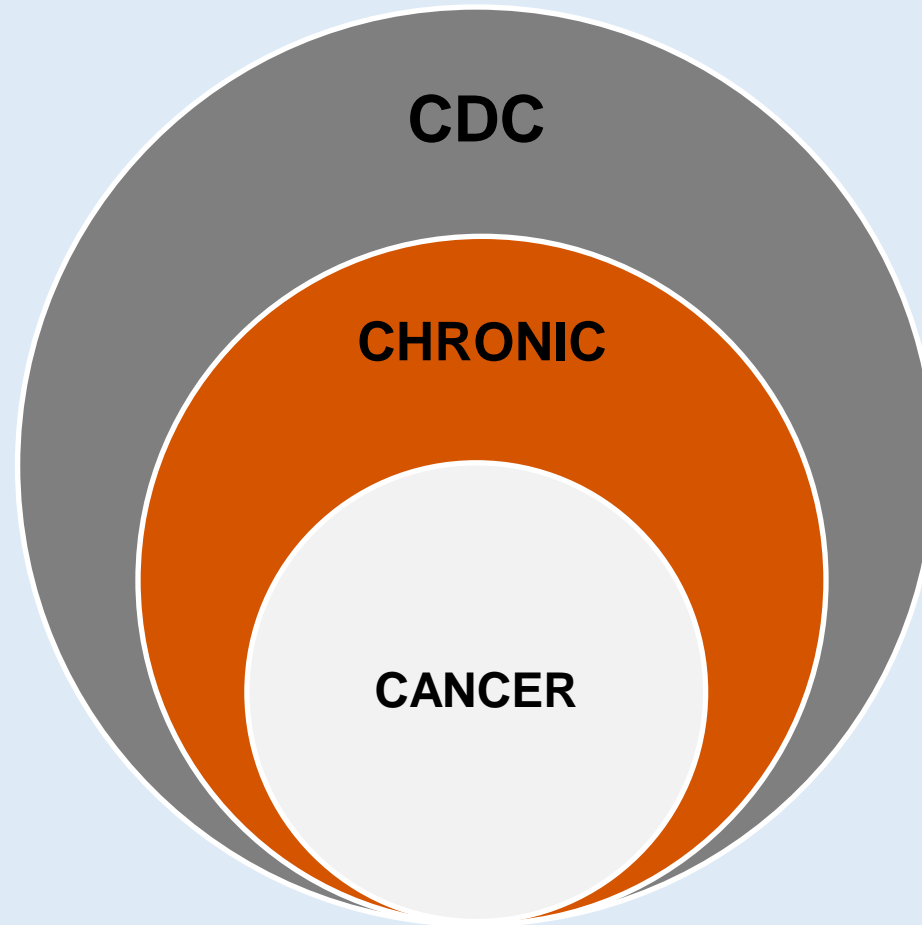
Addictive

Acknowledge Historical Trauma

Priorities

Resources

Where are CDC's Cancer activities housed?



Cancer Prevention and Control in States, Territories and Tribes



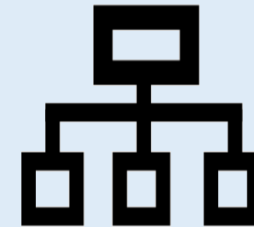
**The National
Breast and
Cervical
Cancer Early
Detection
Program**

**The Colorectal
Cancer Control
Program**

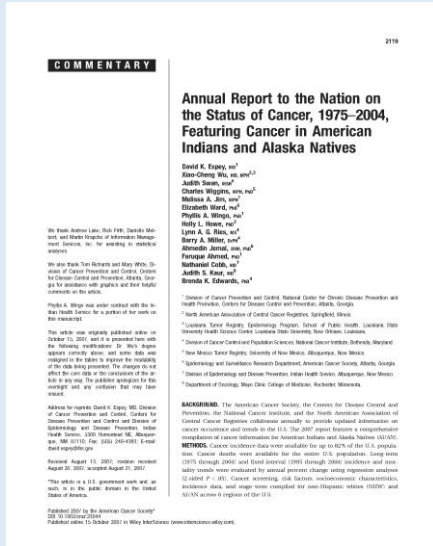


**The
Comprehensive
Cancer Control
Program**

**The National
Program of
Cancer
Registries**

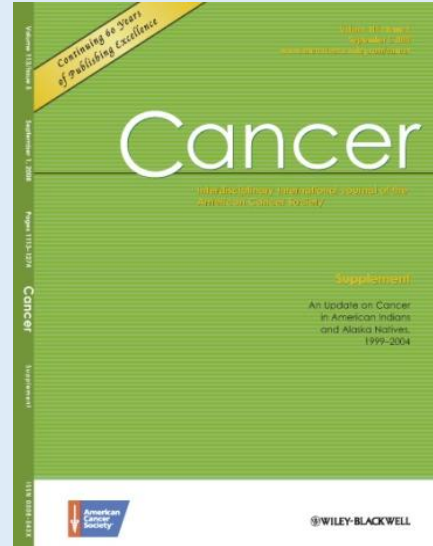


Reporting of AI/AN Cancer Burden



Annual Report to the Nation on the Status of Cancer, 1975-2004, Featured Cancer in American Indians and Alaska Natives

<http://onlinelibrary.wiley.com/doi/10.1002/cncr.23044/pdf>



Cancer Supplement: An Update on Cancer in American Indians and Alaska Natives, 1999-2004

<http://onlinelibrary.wiley.com/doi/10.1002/cncr.v113:5%2Bissuetoc>



American Journal of Public Health

<http://ajph.aphapublications.org/toc/ajph/104/S3>

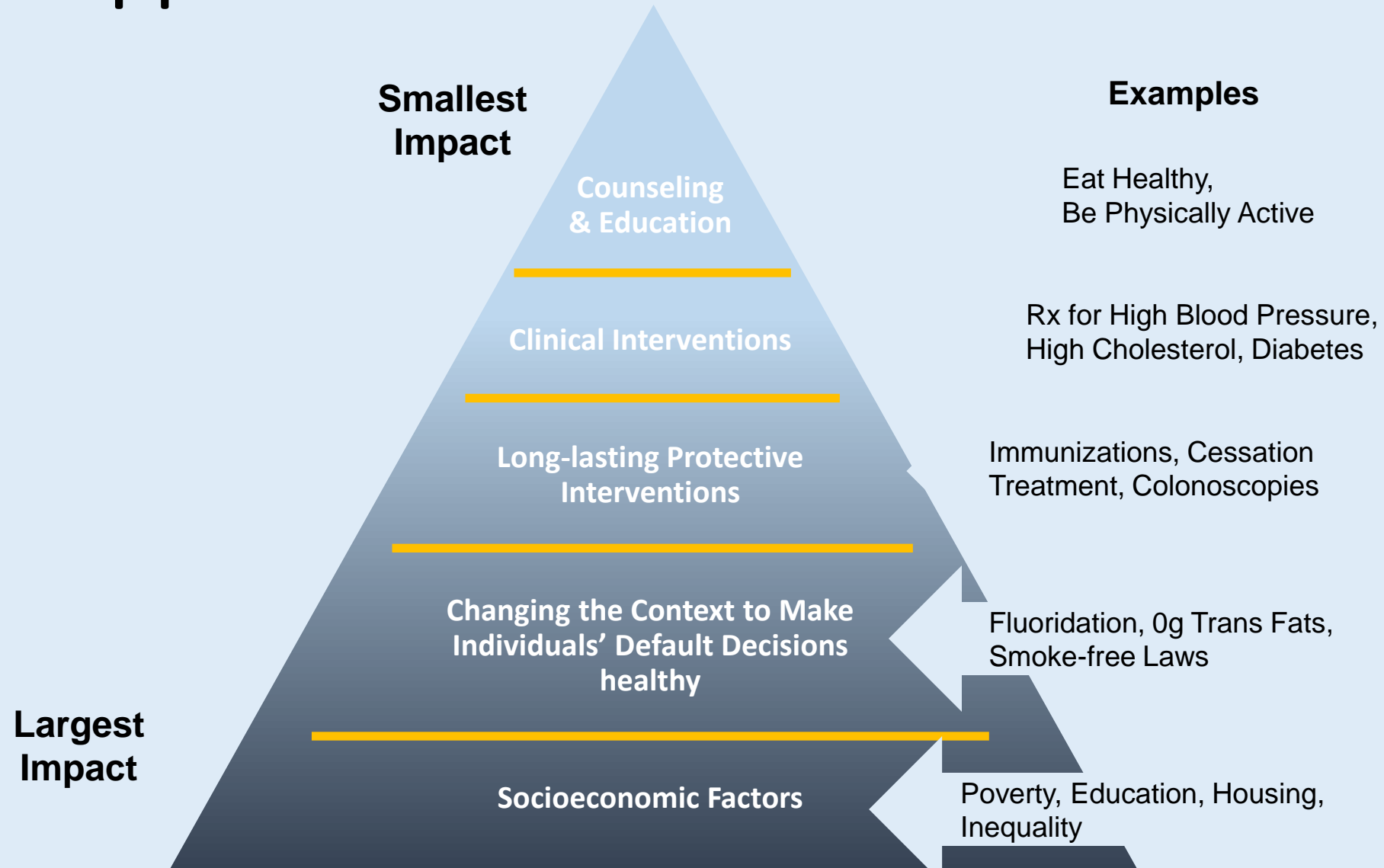
Tribal Activities: Targeted Interventions Across All Cancer Types

	Breast	Cervical	Colorectal	Lung
Community Education	●	●	●	●
Provider Education	●	●	●	●
Reducing Structural Barriers	●	●	●	
Small Media	●	●	●	●
Smoke Free Policies				●
Social Support Interventions	●	●	●	●

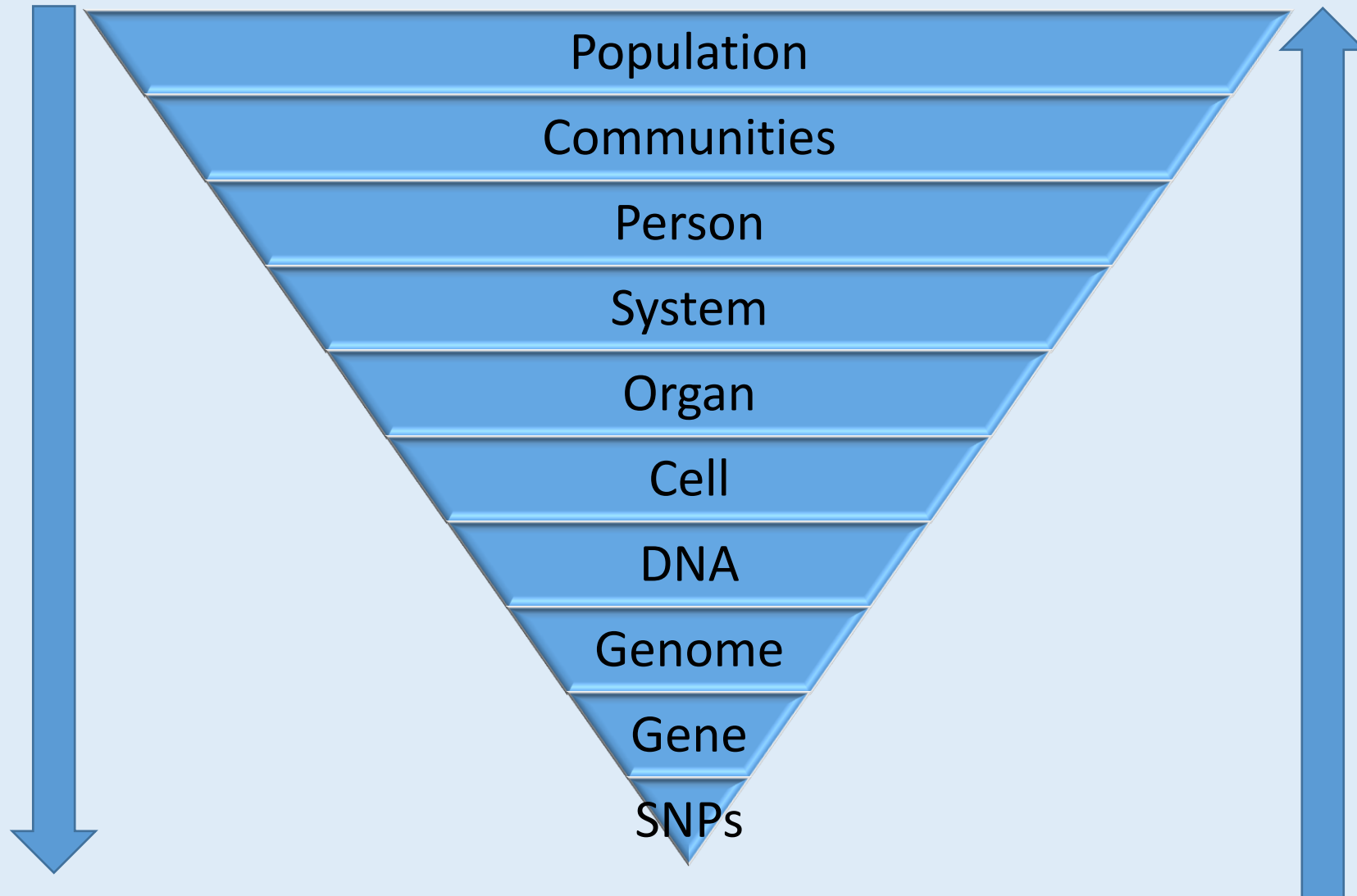
Consortium of National Networks to Impact Populations Experiencing Tobacco-Related and Cancer Health Disparities



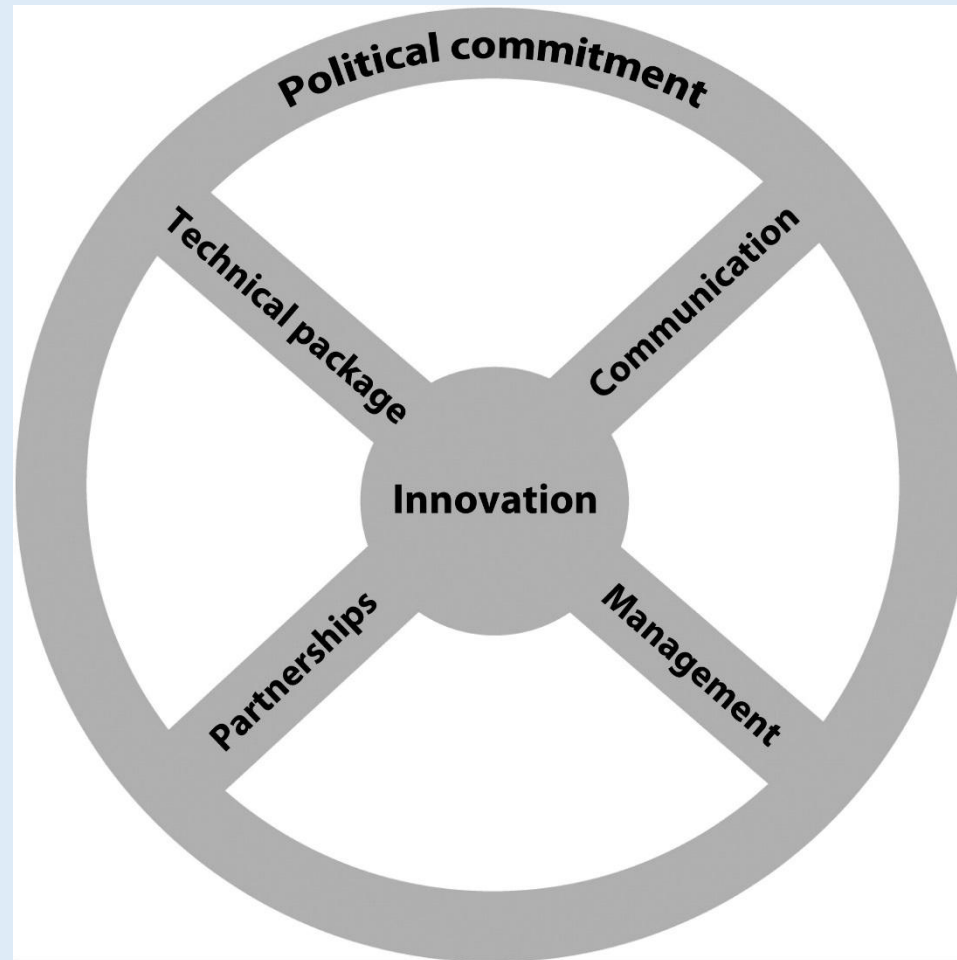
CDC's Approach



Bidirectional Relationships



Six Key Areas for Effective Public Health Implementation



Current Dynamic Landscape



**Health Market
Transformation**

**Exponential Growth
Technology**



**Consumer Preferences
and Expectations**

**Changes in Populations and
Cancers**



DCPC's Strategic Framework

Objective • All people free of cancer

- Goals**
- Elimination of preventable cancers
 - All people get the right screening at the right time
 - People have the best possible cancer care and outcomes
 - Cancer survivors live longer, healthier lives

Data

Translation,
Dissemination
and Evaluation

Partnerships

Collaboration ●

Health Equity ●

Communications ●

Outcomes

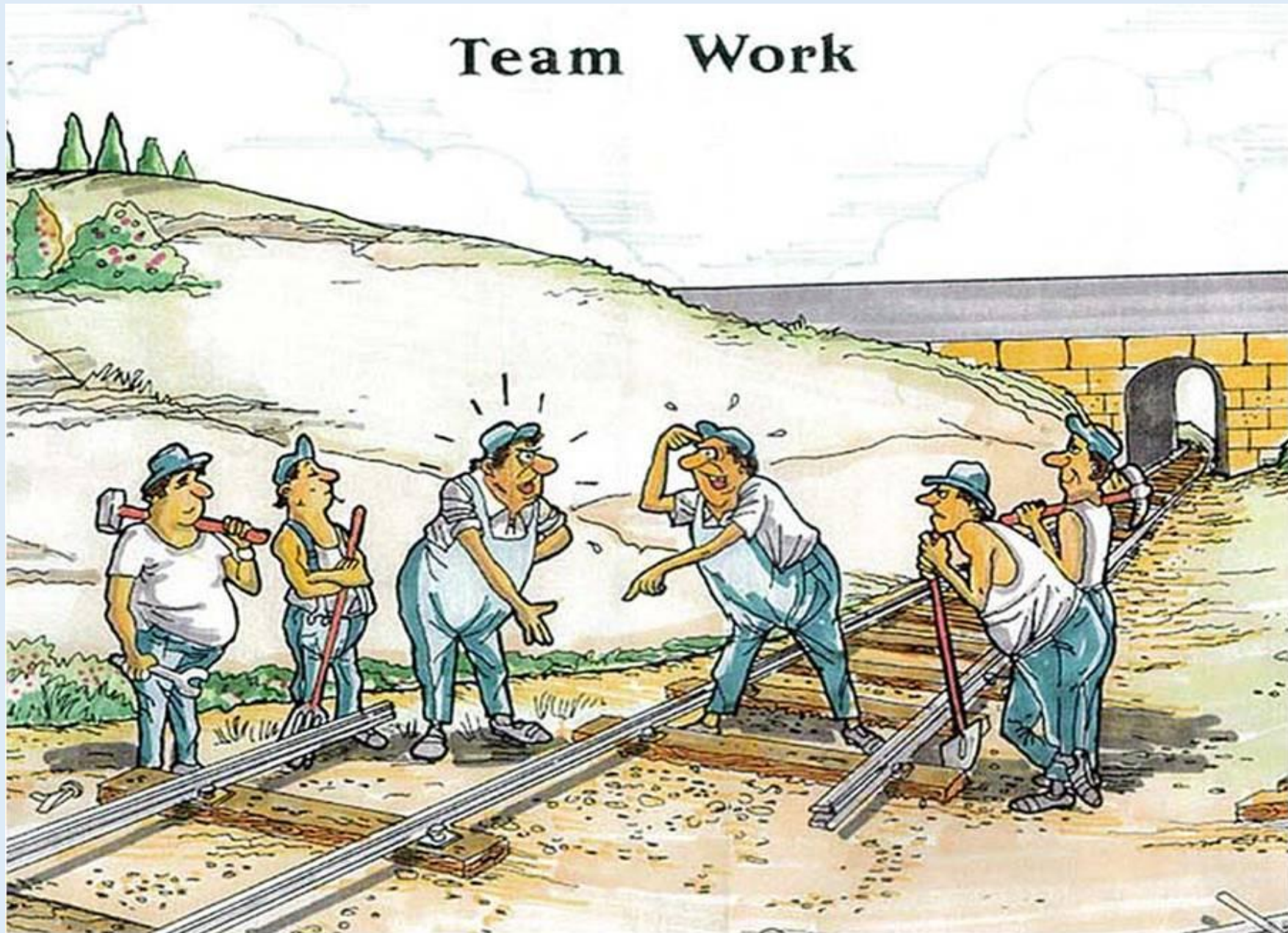
Where do we go from here?



- CDC is/will:

- Committed to continued support for cooperative agreement awardees and activities
- Continue to work with other national partners and organizations to support efforts to increase CRC screening in AI/AN communities
- Committed to continuously seeking and investing in (to the extent possible) new, innovative, and appropriate opportunities

Team Work



For more information please contact Centers for Disease Control and Prevention

1600 Clifton Road NE, Atlanta, GA 30333

Telephone: 1-800-CDC-INFO (232-4636)/TTY: 1-888-232-6348

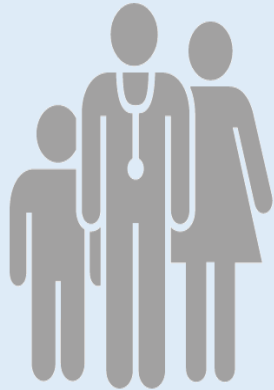
Visit: www.cdc.gov | Contact CDC at: 1-800-CDC-INFO or www.cdc.gov/info

The findings and conclusions in this report are those of the authors and do not necessarily represent the official position of the Centers for Disease Control and Prevention.

National Center for Chronic Disease Prevention and Health Promotion
Division of Cancer Prevention and Control



Comprehensive Cancer Control



The National Comprehensive Cancer Control Program began in 1998.

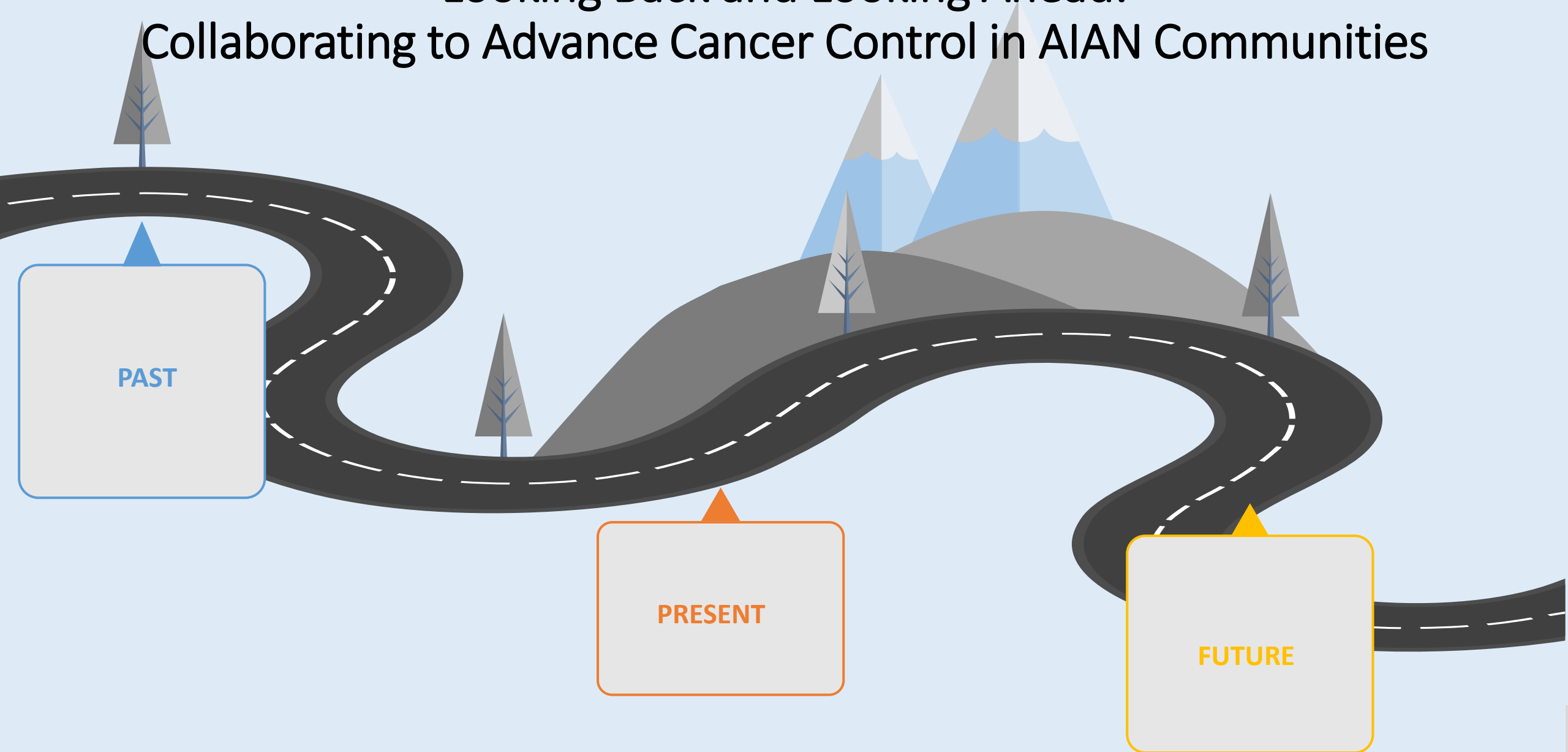
- ❑ Supports robust state-, tribal-, territorial-wide coalitions
- ❑ Addresses public health needs of cancer survivors
- ❑ Plans and implements policy, systems, and environmental changes that emphasize primary prevention of cancer and supports early detection and treatment activities
- ❑ Promotes health equity



2016 American Indian/Alaska Native Cancer Summit

Looking Back and Looking Ahead:

Collaborating to Advance Cancer Control in AIAN Communities



PAST

PRESENT

FUTURE

We are a group of big thinkers.

DCPC Partnerships



Good Health and Wellness in Indian Country
www.alaskacolhealth.org

Regional patterns
Equity NOT Equality

Racial Misclassification
DATA
Hide Tobacco
OK2SHARE

GROUND BREAKING REPORTS
CLINICAL-COMMUNITY LINKAGES

Show Data to Make the Point
HEALTH IN ALL PLACES
Competing
Storytelling
Sustainability
Mortality Incidence Ratio
Cancer Health Disparities
Be Flexible
REAL RATES
Nolan the Colon

Addictive
Acknowledge Historical Trauma
MIYO
Begin with the end in Mind
Priorities NOT
Resources

Why CDC for Cancer Prevention and Control?

