

# Health Policy in the Northwest Past, Present, and Future

Eric Vinson

Northwest Tribal Comprehensive Cancer Program

April 27, 2016

2016 AI/AN Cancer Summit



Northwest Portland Area  
Indian Health Board  
*Indian Leadership for Indian Health*

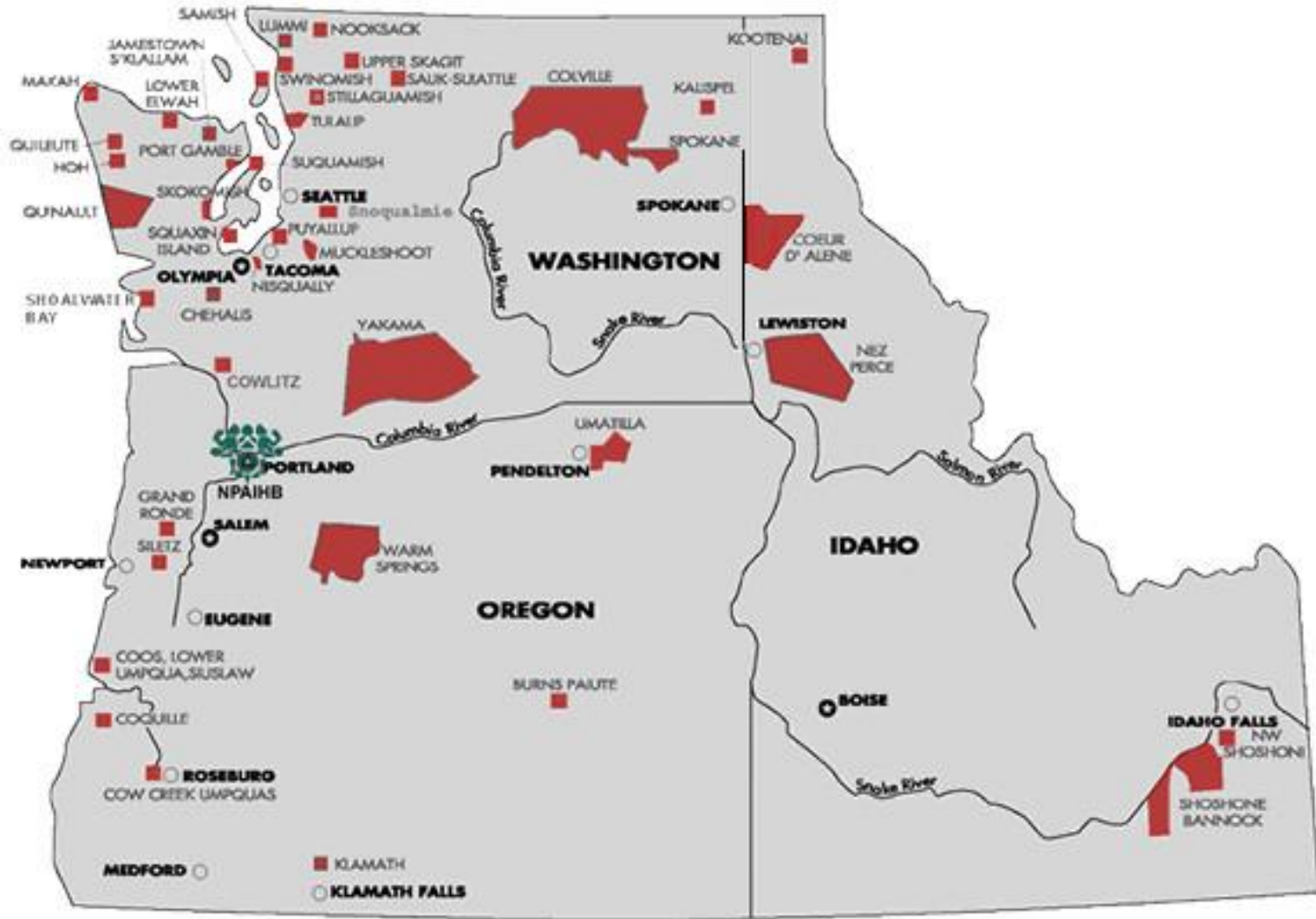


# Organizational Chart





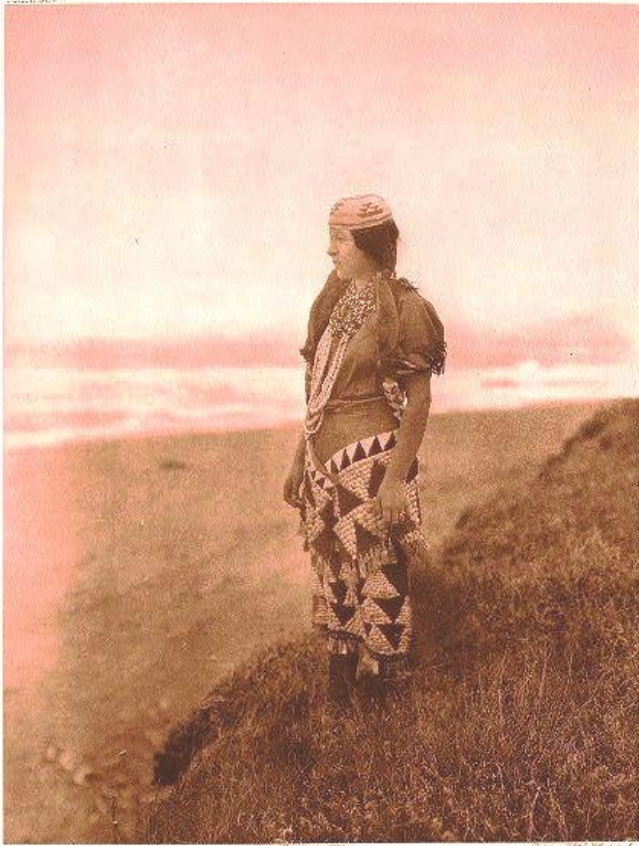
# NPAIHB Member Tribes





# History Tobacco Policy

- 1987 IHS clinics
  - Become smoke free
  - Dr. Everett Rhoades IHS Director
  - With recommendations from Tribal leaders
  - Issues letter to tribal clinics



WIGGANS PRIMITIVE DRESS—TOLUCA



# History Tobacco Policy



- Smokeless Tobacco Survey - 1987
  - PAO Indian Health Service Grant:
  - NPAIHB
  - OSU - Dr. Roberta Hall
  - Dr. Don Dexter (Native Dentist)
- Results:
  - Smoking rates in NW 50%
  - Youth rates smokeless high





# Tribal Tobacco Policy Project

- 1989 TTPP - NCI special populations grant

- NPAIHB
- Oregon Research Institute
- OSU - Dr. Roberta Hall

## Approach:

- Did not address individual behavior
  - (one on one)
- Change in policy could be more beneficial in reducing risk of cancer





# Tribal Tobacco Policy

## Delayed intervention

- 18 tribes first phase
- 18 tribes second phase

## TTPP Workbook

- Piloted
- Revised second phase
- Policy template for Tribal Resolution

## Outreach to THD

- NPAIHB QBM
- Identified tribal advocate
- Tribal site visits





# TTPP Technical Assistance

## Site Visits

- Tribal Health Director
- Health Educator
- CHR
- Clinic nurse
- Prevention counselor
- HR coordinator
- Youth coordinator
- Tribal Health Committee



## Formal presentation

- Work on template for policy in tribal resolution format
- Leave with draft
- Schedule for tribal council agenda item
- Present to tribal council on request with tribal advocate





# Results of TTPP

- 32 of 36 tribal program developed Tribal Tobacco Policy
- 2<sup>nd</sup> intervention had higher success
- Research dilemma:
- What is policy
  - Resolution
  - Executive order
  - Memo from tribal CEO





# Western Tribal Tobacco Prevention Project

- 1996: Worked with tribes, states, NPAIHB
  - Tobacco tax
  - How to engage tribal programs
- Meeting with State, tribal representative, and NPAIHB
  - Funding mechanism for tribal programs
  - Formula (30/70 to assure base amount to tribal programs)



# From there

- 1994- Kerri sat on tobacco Coalition OR & WA
- 1998: Tribal Comprehensive Cancer
  - Tribal comp cancer plan and BRFSS
- 2000 National Tobacco Network
- 2002 RWJ Circle of youth
- 2003 WTTP WA DOH funded NPAIHB (TPEP)
- 2006 National CDC Funding



# CURRENT WORK



# Northwest Tribes Address Public Health Policy Issues

- Special Diabetes Program for Indians (SDPI) Community and Competitive Grants
  - Primary prevention and Cardiovascular Disease
- Child safety seat study (CARS)
- Tribal tobacco policy and prevention
  - State funding to ID and OR
- NPAIHB tribal resolution supporting tribal comprehensive cancer plan
- Safe walking trails
- Seat belt survey and law
- Healthy food options
  - Vending machines, menu and store
- Immunizations
- Childhood obesity prevention
- Tribal Tobacco Policy Project





# Data Sources

- Community assessment
- CDC CHANGE Tool
- Tribal BRFSS
- IHS Diabetes Audit
- GPRA
- NextGen Health Quality Measures (HQM) Module
- NPAIHB Linkages



# CDC change tool

- Community Health Assessment
- Physical activity
- Nutrition
- Tobacco
- Disease Self Management
- Leadership



# Sectors

- Community at large
- Community Institution Organization
- Worksite
- Health care
- School



# Positive outcomes

- Addressed Policy issues:
  - Housing
  - Nutrition
  - Physical activity
  - Walking path



# Challenges

- Labor intensive
- Cultural issues
- Urban focus
- Jurisdiction





# Tribal BRFSS

- Community assessment
- Address needs in community
- Utilize, expand, create services



# BRFSS Report

**Table 5. During your lifetime have you smoked at least 100 cigarettes?**

	Tribe 1 (n=279)		Tribe 2 (n=298)		Tribe 3 (n=424)		Tribe 4 (n=317)	
	n	%	n	%	n	%	n	%
<b>Yes</b>	161	57.7%	177	59.4%	283	66.8%	167	52.7%

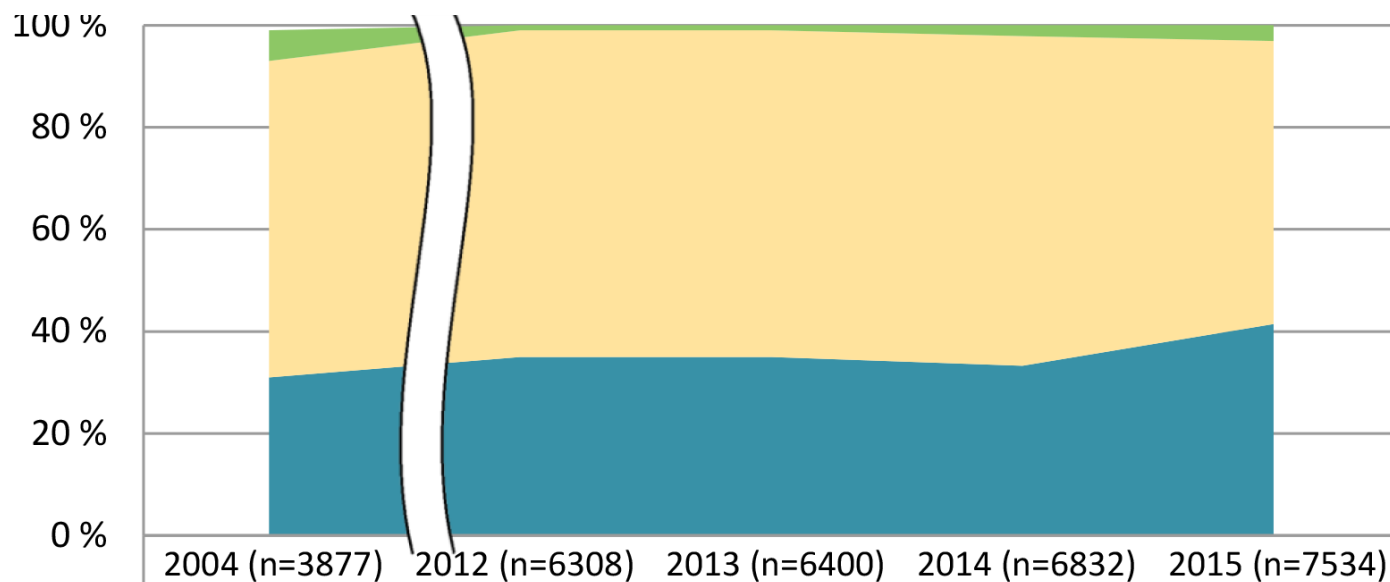
**Table 6. Do you smoke cigarettes now?**

	Tribe 1 (n=283)		Tribe 2 (n=299)		Tribe 3 (n=424)		Tribe 4 (n=319)	
	n	%	n	%	n	%	n	%
<b>Yes</b>	73	25.8%	69	23.1%	142	33.5%	76	23.8%



# Diabetes Audit Results 2004-15

## Tobacco Use

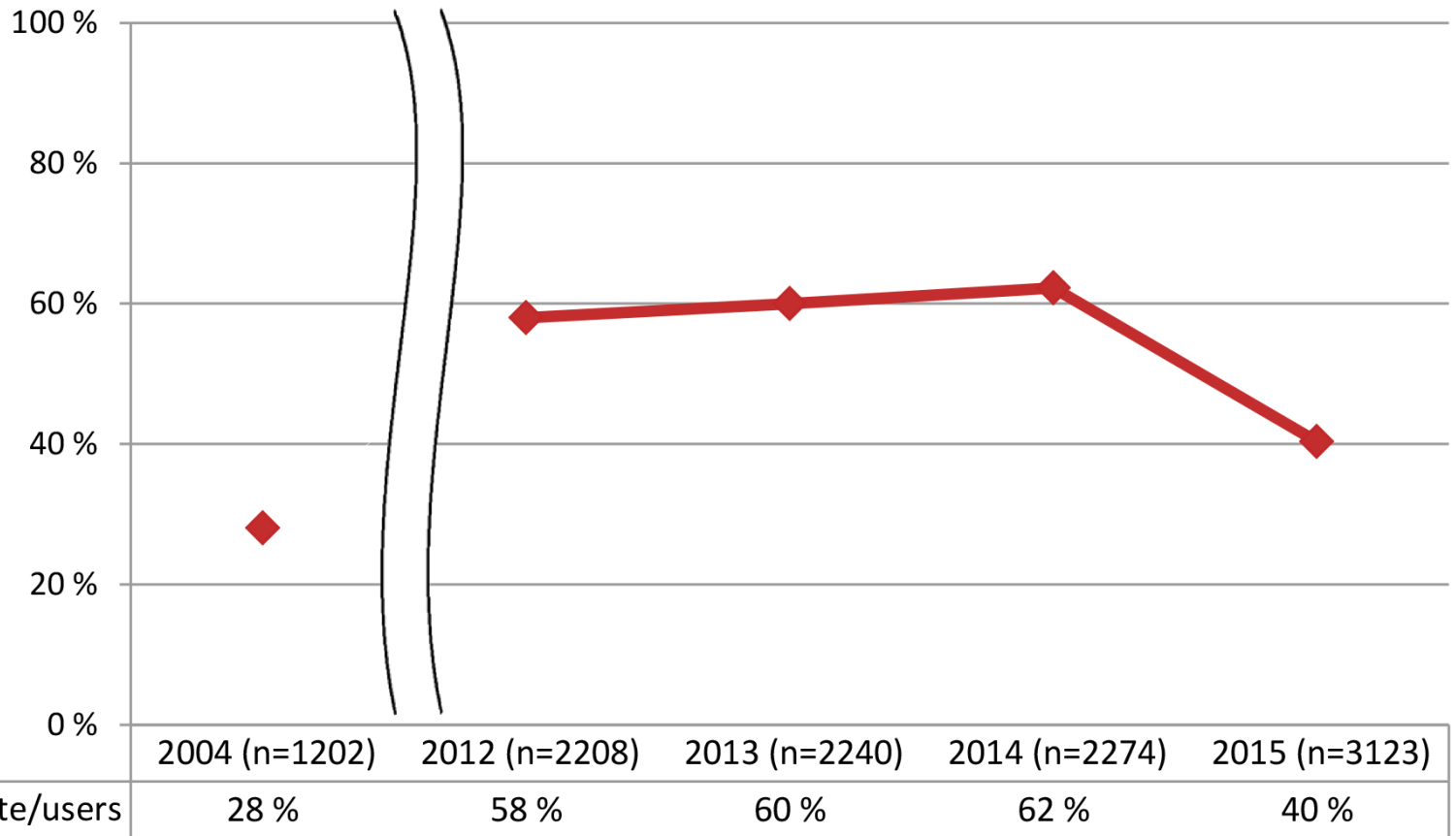


■ Tobacco use not documented	6 %	1 %	1 %	2 %	3 %
■ Not a current tobacco user	62 %	64 %	64 %	65 %	55 %
■ Current tobacco user	31 %	35 %	35 %	33 %	41 %



# Diabetes Audit Results 2004-15

## Tobacco Cessation Referrals





# PSE Comprehensive Cancer

- Screening (colorectal)
- Immunization (HPV)
- Tobacco
- Nutrition
  - Increase healthy options
  - Sugar sweetened beverages
- Physical Activity





# **FUTURE DIRECTIONS**



# Tobacco PSE

- Tribal Administration Campus
- Tribal Clinic tobacco cessation protocol
- Education
- Gathering Spaces
- Events and Gatherings
- Tribally Run Businesses
- Smokefree Tribal Housing
- Policy rulemaking for Oregon Medicaid reimbursement of Pharmacy based cessation counseling



# Chronic Disease PSE

- Worksite Wellness
- Community Nutrition & Physical Activity
- Self-management programs



# Cancer Survivorship

- Protocol for Care coordination
  - Cancer Treatment Summary and Survivorship plan
    - Implementation ASCO HL7 Data Interoperability Standard
    - ACOS: CoC Standard 3.3
  - Tribal Cancer Center (Salish Oncology)
  - Tribal clinics



# Contact Information

Kerri Lopez (Tolowa), Project Director

Eric Vinson (Cherokee), Project Coordinator

Antoinette Aguirre (Navajo), Cancer Prevention Coordinator

Tom Becker, MD, PhD, Medical Epidemiologist

Phone: 503-416-3301

Email: [klopez@npaihb.org](mailto:klopez@npaihb.org)