



***Looking Back and Looking Ahead:  
Collaborating to Advance Cancer Control in  
American Indian/Alaska Native Communities***

*Continuing Momentum Beyond the Summit*

April 26-28, 2016  
Traverse City, Michigan

**Lisa C. Richardson, MD, MPH**  
Director, Division of Cancer Prevention and Control,  
Centers for Disease Control and Prevention

# The Gang is All Here



# Special Thank You to Nina Miller





Good Health and Wellness in Indian Country

[www.alaskacolhealth.org](http://www.alaskacolhealth.org)

Regional patterns

Equity NOT Equality

Racial Misclassification

DATA

Hide Tobacco  
OK2SHARE

Mortality Incidence Ratio

Cancer Health Disparities

Sustainability Be Flexible

Show Data to Make the Point  
HEALTH IN ALL PLACES REAL RATES

Competing

Storytelling

Nolan the Colon

MIYO

Begin with the end in Mind

GROUND BREAKING REPORTS  
CLINICAL-COMMUNITY LINKAGES

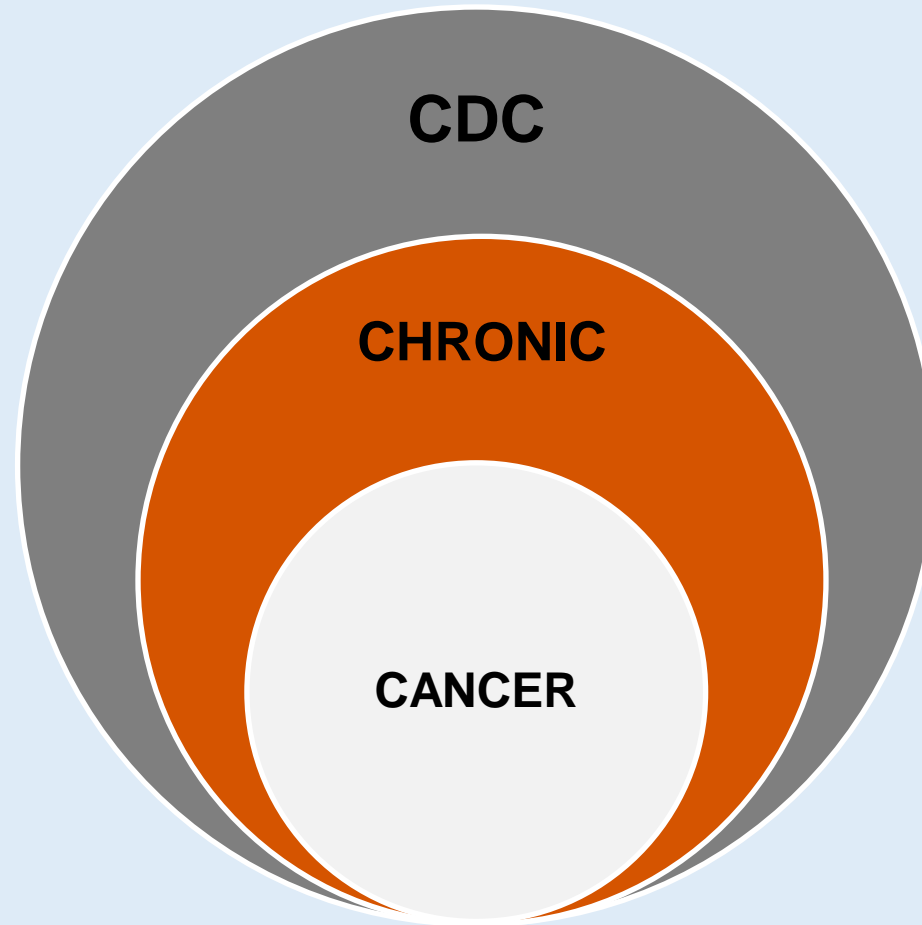
Addictive

Acknowledge Historical Trauma

Priorities

Resources

# Where are CDC's Cancer activities housed?

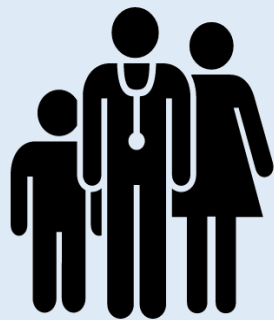


# Cancer Prevention and Control in States, Territories and Tribes



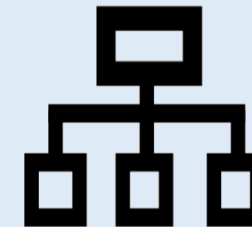
**The National  
Breast and  
Cervical  
Cancer Early  
Detection  
Program**

**The Colorectal  
Cancer Control  
Program**

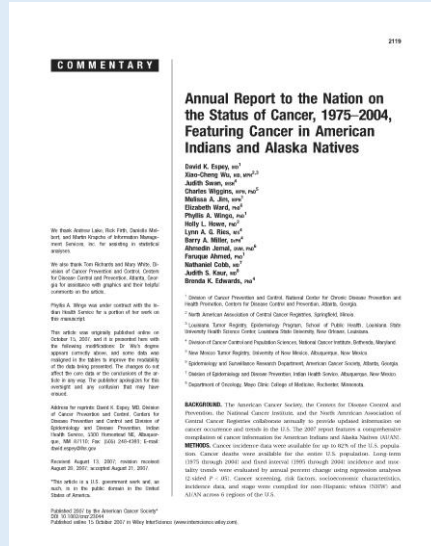


**The  
Comprehensive  
Cancer Control  
Program**

**The National  
Program of  
Cancer  
Registries**

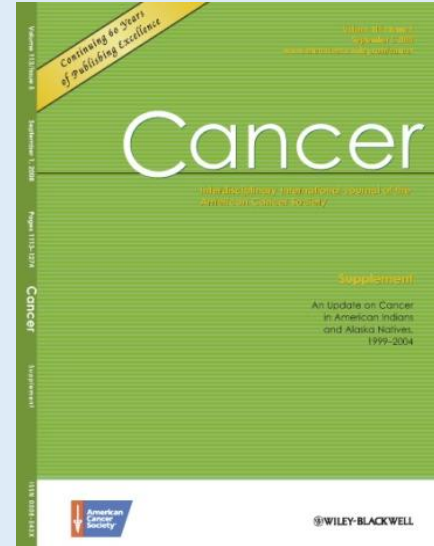


# Reporting of AI/AN Cancer Burden



Annual Report to the Nation on the Status of Cancer, 1975-2004, Featured Cancer in American Indians and Alaska Natives

<http://onlinelibrary.wiley.com/doi/10.1002/cncr.23044/pdf>



Cancer Supplement: An Update on Cancer in American Indians and Alaska Natives, 1999-2004

<http://onlinelibrary.wiley.com/doi/10.1002/cncr.v113:5%2Bissuetoc>



American Journal of Public Health

<http://ajph.aphapublications.org/toc/ajph/104/S3>



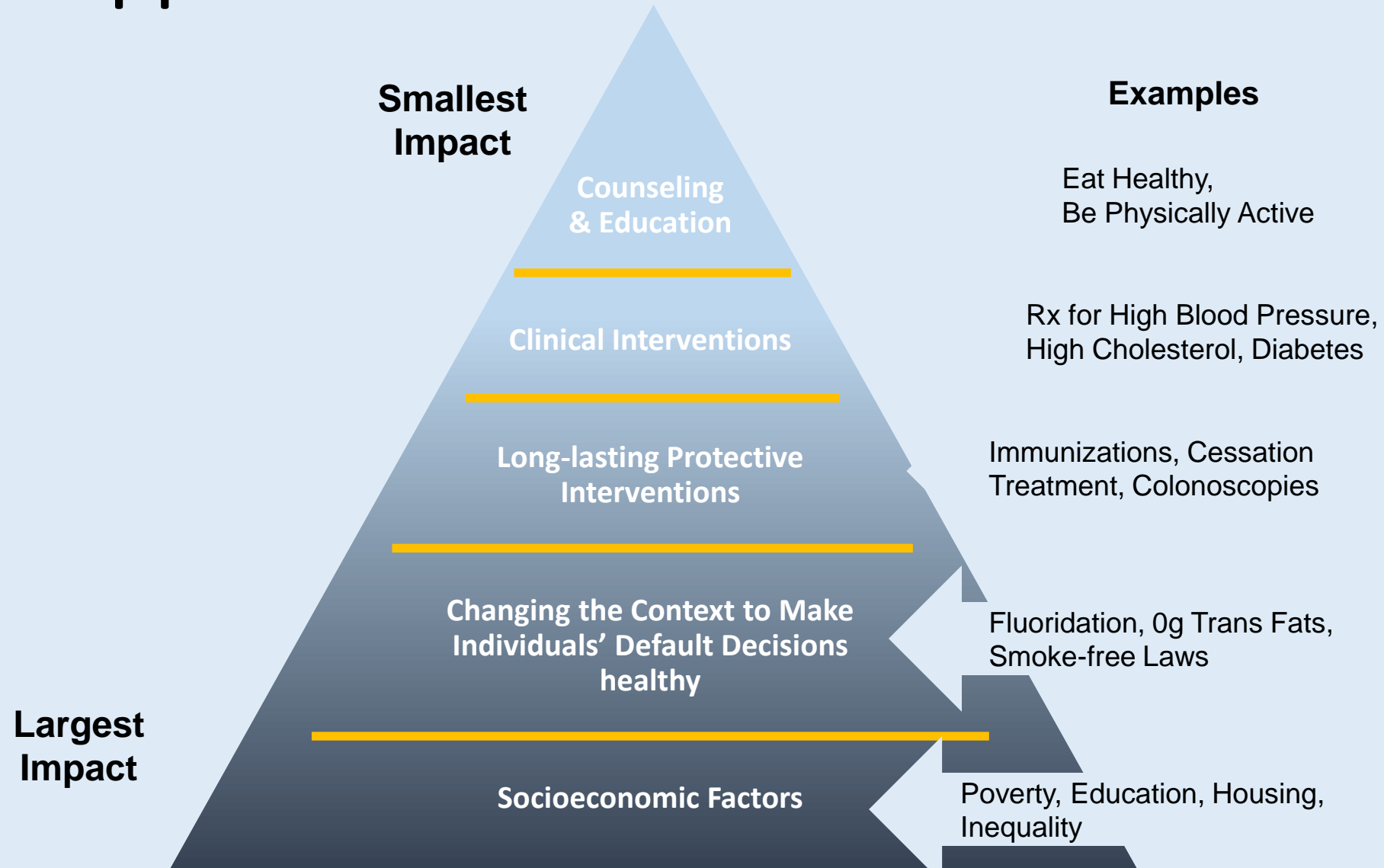
# Tribal Activities: Targeted Interventions Across All Cancer Types

	Breast	Cervical	Colorectal	Lung
Community Education	●	●	●	●
Provider Education	●	●	●	●
Reducing Structural Barriers	●	●	●	
Small Media	●	●	●	●
Smoke Free Policies				●
Social Support Interventions	●	●	●	●

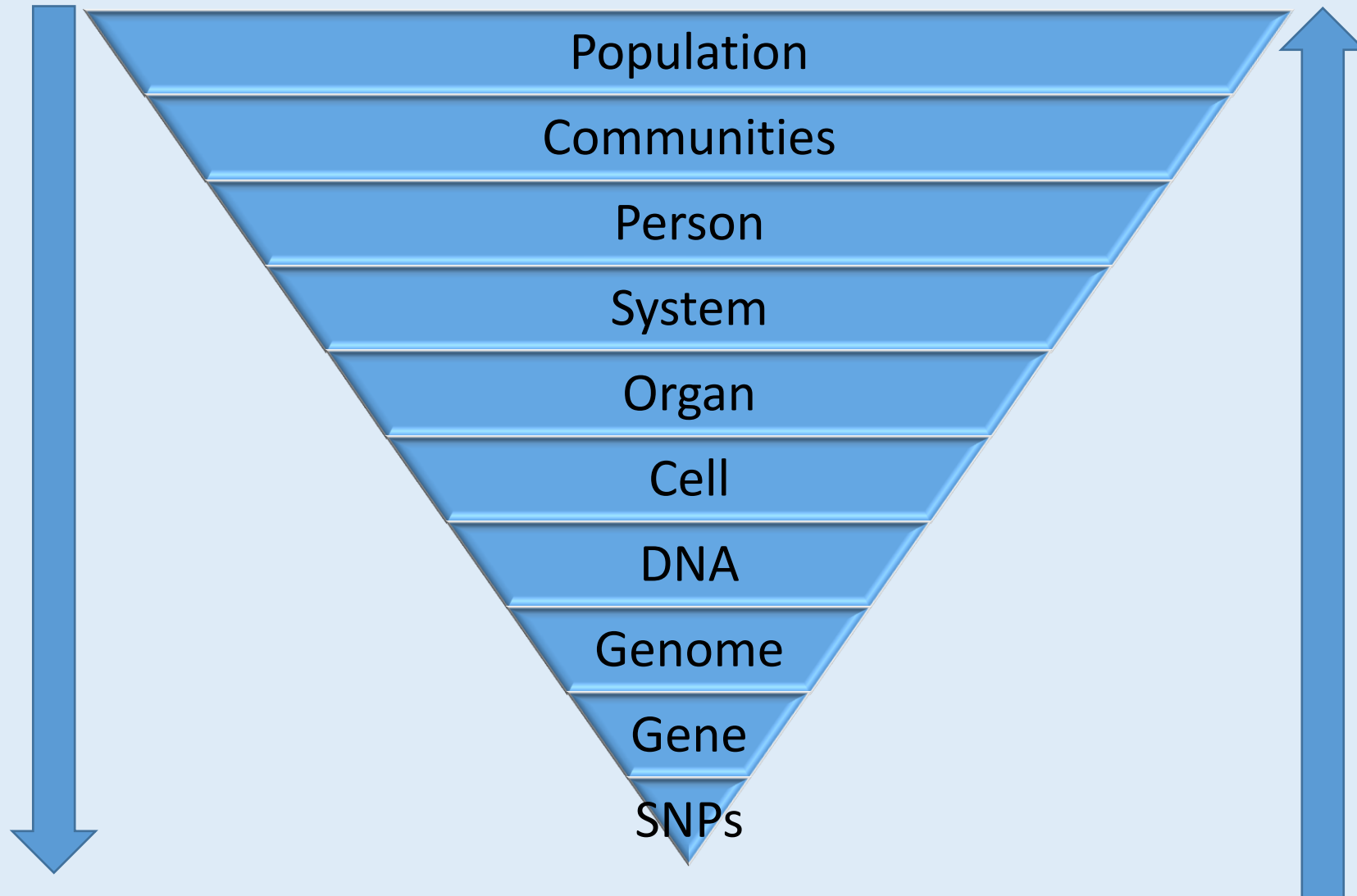
**Consortium of National Networks  
to Impact Populations  
Experiencing Tobacco-Related and  
Cancer Health Disparities**



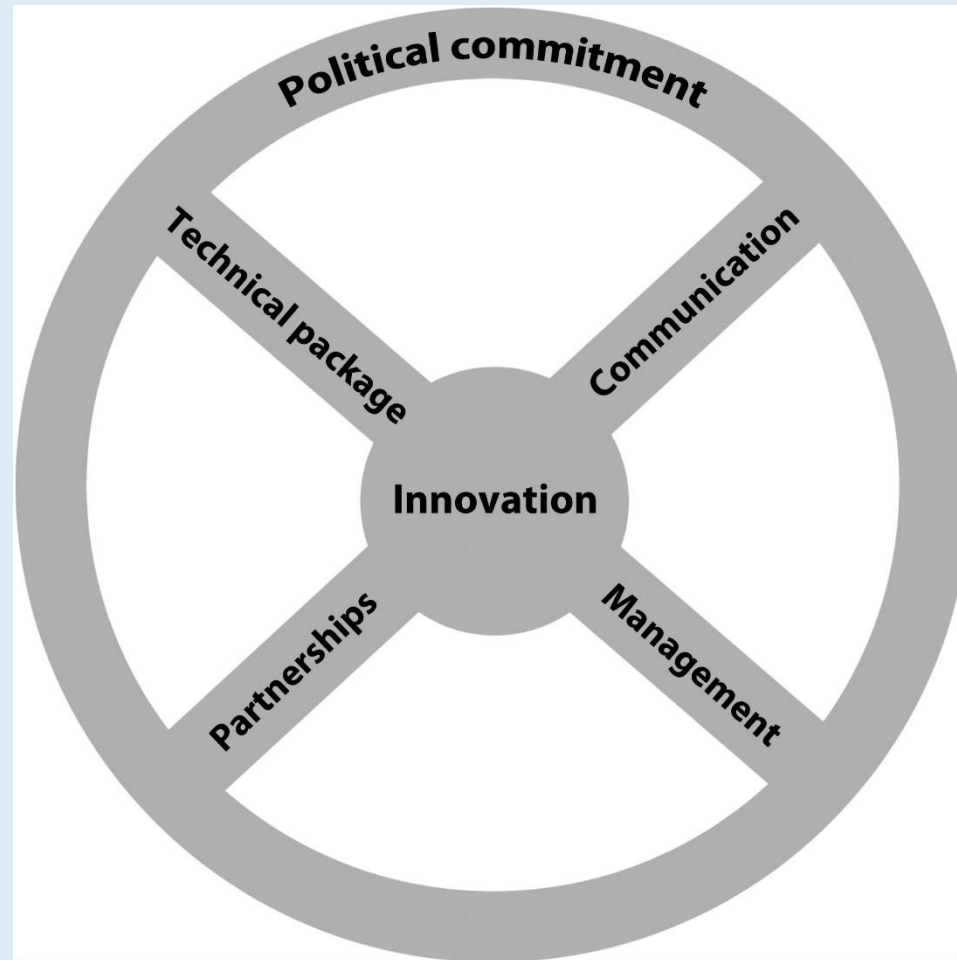
# CDC's Approach



# Bidirectional Relationships



# Six Key Areas for Effective Public Health Implementation



# Current Dynamic Landscape



**Health Market  
Transformation**

**Exponential Growth  
Technology**



**Consumer Preferences  
and Expectations**

**Changes in Populations and  
Cancers**



# DCPC's Strategic Framework

**Objective** • All people free of cancer

- Goals**
- Elimination of preventable cancers
  - All people get the right screening at the right time
  - People have the best possible cancer care and outcomes
  - Cancer survivors live longer, healthier lives



Collaboration ●

Health Equity ●

Communications ●

Outcomes

# Where do we go from here?

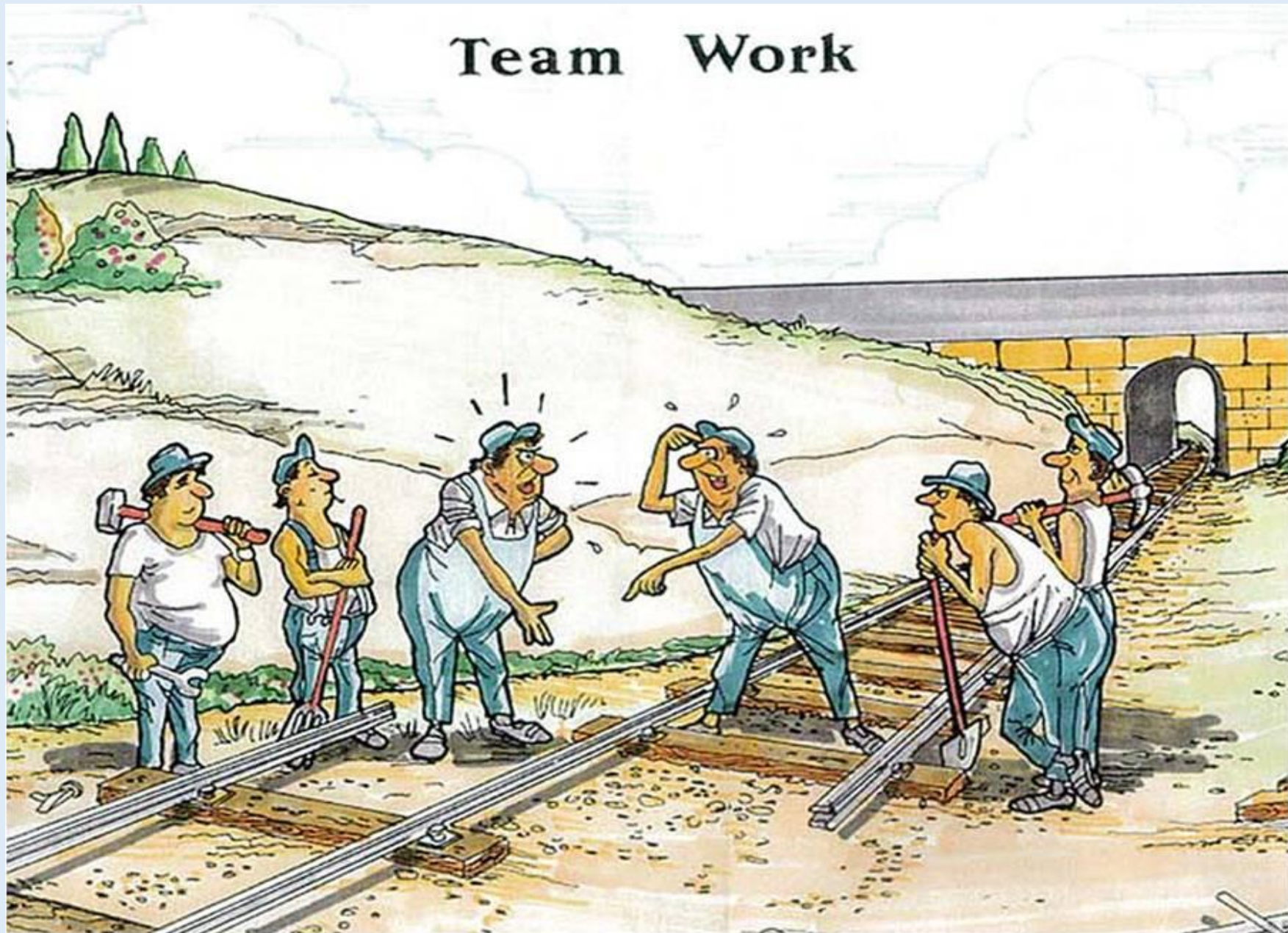


- CDC is/will:

- Committed to continued support for cooperative agreement awardees and activities
- Continue to work with other national partners and organizations to support efforts to increase CRC screening in AI/AN communities
- Committed to continuously seeking and investing in (to the extent possible) new, innovative, and appropriate opportunities



# Team Work



**For more information please contact Centers for Disease Control and Prevention**

1600 Clifton Road NE, Atlanta, GA 30333

Telephone: 1-800-CDC-INFO (232-4636)/TTY: 1-888-232-6348

Visit: [www.cdc.gov](http://www.cdc.gov) | Contact CDC at: 1-800-CDC-INFO or [www.cdc.gov/info](http://www.cdc.gov/info)

The findings and conclusions in this report are those of the authors and do not necessarily represent the official position of the Centers for Disease Control and Prevention.

National Center for Chronic Disease Prevention and Health Promotion  
Division of Cancer Prevention and Control

