



sophe^{68th}
annual meeting
scaling
new heights:

HEALTH FOR ALL

THANK YOU
CONFERENCE SUPPORTERS



Credentialing Excellence in Health Education



DEPARTMENT OF
APPLIED HEALTH SCIENCE

INDIANA UNIVERSITY
School of Public Health
Bloomington

publichealth.indiana.edu/~aphealth



JOIN US IN
DENVER

MARCH 30-APRIL 1, 2017

Early Bird Deadline
December 15, 2016

Denver, Colorado • March 30–April 1, 2017

PROGRAM IN BRIEF

WEDNESDAY, MARCH 29, 2017

8:30am – 5:00pm	PRE-CONFERENCE WORKSHOP*: SCRIPT (Smoking Cessation & Reduction in Pregnancy Treatment Workshop)
9:00am – 5:00pm	Student Case Study Competition (Undergraduate & Graduate)
12:00pm	Registration Open
10:30am – 5:30pm	SOPHE Board of Trustees
12:30pm – 3:00pm	PRE-CONFERENCE WORKSHOP*: Colorado: Marijuana & Public Health: Lessons Learned
1:00pm – 3:30pm	PRE-CONFERENCE WORKSHOP*: School Health
3:30pm – 6:00pm	PRE-CONFERENCE WORKSHOP*: CEPH Workshop
4:00pm – 6:00pm	Exhibitor Set up
4:00pm – 8:00pm	PRE-CONFERENCE WORKSHOP*: What, Why, How: Public Health Law
5:30pm – 7:30pm	SOPHE House of Delegates meeting
7:00pm – 10:00pm	ESG's 50th Anniversary Celebration*

*Additional Fees Apply

THURSDAY, MARCH 30, 2017

7:00am – 7:00pm	Registration Open
7:30am – 8:30am	NEW SOPHE MEMBER WELCOME
9:00am – 11:00am	OPENING PLENARY: WELCOME AND DEDICATION OF THE 68TH ANNUAL CONFERENCE <ul style="list-style-type: none">Jennifer Perkins, PhD, CHES SOPHE 2017 Annual Meeting TrusteeM. Elaine Auld, MPH, MCHES SOPHE Chief Executive Officer
	SOPHE PRESIDENTIAL ADDRESS <ul style="list-style-type: none">David Birch, PhD, MCHES; SOPHE 2016-2017 President
	KEYNOTE ADDRESS <ul style="list-style-type: none">James Marks, MD, MPH; Executive Vice President, Robert Wood Johnson Foundation
11:15am – 12:45pm	CONCURRENT SESSIONS A A1: IGNITE: Professional Practice A2: Student Workshop A3: Interdependence Succeeds: Community Alliances A4: Nutrition Information Sources and Solutions A5: Minorities, Poor & Medically Underserved Populations A6: Zoom out your Lens: Cultural Competency in Public Health
12:45pm – 2:00pm	Lunch on your own
1:00pm – 2:00pm	POSTER PROMENADE – DAY 1
2:00pm – 3:30pm	CONCURRENT SESSIONS B B1: SOPHE History Session B2: Reassessing the Model: Ideas on Evaluation Methods and Data Sets B3: Reaching LGBT Populations B4: To Do or Not To Do: Vaccinations B5: Roundtables: Food Access & Nutrition B6: Global Health Roundtables
3:45pm – 5:15pm	INTERSECTION OF HEALTH, INNOVATION & TECHNOLOGY <ul style="list-style-type: none">Mark J. Kittleston, PhD, Dean, School of Health & Human Performance State University of New York, Brockport
5:45pm – 7:30pm	OPENING RECEPTION & EXHIBITORS ON PARADE

FRIDAY, MARCH 31, 2017

7:00am	Registration Open
7:00am – 8:00am	EARLY BIRD SESSIONS EB1: Roundtable: Health for All EB2: Advocacy EB3: Curricular Mapping with HESPA Competencies
8:30am – 10:00am	CONCURRENT SESSIONS C C1: Breaking Down and Building Up: Collaborative Health Promotion C2: Eta Sigma Gamma Session C3: Lessons that Transcend Boards: The Global Experience C4: Delivery Matters: Factors that Enhance Sexual Education C5: Roundtable: Technology C6: Results-Based Accountability
10:15am – 11:00am	PLENARY III 2017 ELIZABETH FRIES HEALTH EDUCATION AWARD RECIPIENT <ul style="list-style-type: none">John P. Allegrante, PhD Professor of Health Education Teachers College, Columbia University
11:15am – 12:45pm	CONCURRENT SESSIONS D D1: IGNITE: Nutrition D2: EACH D3: Health Systems Delivery D4: Where Does it Stop? A Look Inside Violence Prevention D5: Roundtable: Beyond Silos D6: Getting Involved Locally: SOPHE Chapters
1:00pm – 2:30pm	Lunch on your own
1:00pm – 2:00pm	SOPHE All Members Business Meeting
2:30pm – 4:00pm	PLENARY IV: CULTIVATING WORKFORCE DIVERSITY: TRANSGENERATIONAL ISSUES AND SOLUTIONS CONCURRENT SESSIONS E E1: Never Static: Our Workforce in Flux E2: Education & Intervention: Pregnancy as a Choice E3: Student Engagement: Hands on Learning E4: Tools for Advancing Health Promotion E5: Roundtable: Community E6: HBCU Research and Ethics Roundtables
4:15pm – 5:45pm	SOPHE AWARDS CEREMONY & RECEPTION
6:00pm – 8:00pm	

SATURDAY, APRIL 1, 2017

8:30am – 10:00am	CONCURRENT SESSIONS F F1: Ignite: Children/Teens F2: Catalysts on Campus: College Health F3: The Virtual is Reality: Online Health Education F4: Smoke-Free Policies for Healthy Environments F5: Where We Live, Work, Play: The Environment and Our Health
10:15am – 12:00pm	PLENARY V: PANEL: RACE, VIOLENCE PREVENTION & PUBLIC HEALTH CHES Exam Prep Course, Part 1
1:30pm – 5:30pm	

SUNDAY, APRIL 2, 2017

8:00am – 12:00pm	CHES Exam Prep Course, Part 2
------------------	-------------------------------

ADDITIONAL DETAILS AND UPDATES:

MY.SOPHE.ORG/MEETINGS-EVENTS/SOPHE-ANNUAL-CONFERENCE-2017

REGISTRATION NOW OPEN

	EARLY BIRD RATE (through 12/15/16)	PRE-CONFERENCE RATE (12/16/16 – 2/28/17)	ONSITE RATE
SOPHE National Member	\$395	\$425	\$455
SOPHE Student Member	\$250	\$275	\$315
SOPHE Emeritus Member	\$250	\$275	\$315
SOPHE Chapter Member**	\$445	\$495	\$535
Non-member Professional	\$595	\$645	\$685
Non-member Student	\$295	\$315	\$345

Registration fee includes conference materials, breaks, opening social, Awards ceremony and reception, and all CHES/MCHES/CPH continuing education fees!

If you are not already a SOPHE member, JOIN now and save off the non-member professional rate!

**If you are a member of your local SOPHE Chapter (and not currently a national SOPHE member), talk to your chapter leadership today about a special discount code to register!

Conference Details, Registration and Hotel reservation link can be found at <http://my.sophe.org/Meetings-Events/SOPHE-Annual-Conference-2017>

PRE- AND POST-CONFERENCE WORKSHOPS

Additional fees apply. Limited Space available. Additional information can be found at <http://my.sophe.org/Meetings-Events/SOPHE-Annual-Conference-2017>

SMOKING CESSATION AND REDUCTION IN PREGNANCY TREATMENT (SCRIPT) WORKSHOP

Wednesday, March 29
8:30am – 5:00pm

PRE-CONFERENCE WORKSHOP*: COLORADO: MARIJUANA & PUBLIC HEALTH: LESSONS LEARNED

Wednesday, March 29
12:30pm – 3:00pm

PRE-CONFERENCE WORKSHOP*: SCHOOL HEALTH

Wednesday, March 29
1:00pm – 3:30pm

PRE-CONFERENCE WORKSHOP*: IMPLEMENTING NEW PUBLIC HEALTH CURRICULAR REQUIREMENTS IN HEALTH EDUCATION AND OTHER PUBLIC HEALTH DEGREE PROGRAMS (CEPH)

Wednesday, March 29
3:30pm – 6:00pm

PRE-CONFERENCE WORKSHOP*: WHAT, WHY, HOW: PUBLIC HEALTH LAW

Wednesday, March 29
4:00pm – 8:00pm

CHES EXAM PREP COURSE

Saturday, April 1 (1 – 5pm) and Sunday, April 2 (8am – 12pm)

MEETING HIGHLIGHTS

AWARDS CEREMONY

The SOPHE 2017 Awards presentations will be included in the SOPHE 2017 events and registration. SOPHE wants everyone to have the opportunity to participate in this inspiring event! There will be a ceremony and reception on Friday evening, March 31. Join us to hear the impact that individuals are making in the field! Be inspired to make a difference of your own!

STUDENT WORKSHOP

This special session, hosted by SOPHE and ESG, is geared toward students and new professionals. We will focus on activities and skill building that you will need to enter and sustain a successful career. There is no additional cost to this session.

INNOVATIVE SESSION FORMATS

Back by popular demand, SOPHE2017 will offer a wide variety of session presentations. Beyond the standard oral presentation sessions, SOPHE will offer: **IGNITE**: Quick, inspiring presentations that will spark discussions. **ROUNDTABLE**: Collaborate with your colleagues to discuss questions and issues related to health education.

POSTER PROMENADE

In addition to the many concurrent presentations each day, we also provide the opportunity for you to view over 125 poster presentations. Each day, we will highlight a smaller group that will be available for CE credit. Join the Poster Promenade each day to review these highly scored posters and speak to the authors.

EXHIBITORS

Plan to visit SOPHE's valued exhibitors to learn about their programs, publications, tools and innovations.

CONTINUING EDUCATION

Earn more than a quarter of your 5-year recertification CECH's in just 2 ½ days! Administrative fees for continuing education are included in the conference registration fees. An application for approximately 20 hours of CE has been submitted for Category I Continuing Education Contact Hours (CECH) to award Certified Health Education Specialists (CHES) and Master Certified Health Education Specialists (MCHES) contact hours. SOPHE is a designated multiple-event provider of CECHs by the National Commission for Health Education Credentialing, Inc. The conference will also award Certified in Public Health (CPH) credits. SOPHE is an approved provider of CPH Renewal Credits by the National Board of Public Health Examiners.

CHES EXAM PREP COURSE*

Prepare to take the CHES exam with this interactive, face-to-face study session designed as a refresher of the key principles, concepts and techniques in health education. Participants receive a copy of the CHES Exam Study Guide and a suggested reading list. *Additional fees apply.

CONFERENCE HOTEL

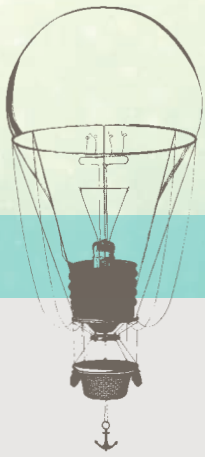
The Hyatt Regency is located next to the Colorado Convention center in downtown Denver. For the best rate, reserve your room early at the SOPHE discounted rate of \$178/per night. Book early! Cut off date is March 7, 2017 or sooner if our room block sells out quickly!

SOPHE 2017 HOTEL RESERVATIONS:

<https://resweb.passkey.com/go/spheannualmeeting2017>

SOPHE GIVING

Campaign for the 21st Century: Building SOPHE's Future: Your generous gift will help SOPHE provide scholarships to students to attend SOPHE meetings, as well as allow SOPHE to continue providing opportunities for learning and leading in the health education and promotion profession.



scaling new heights:

HEALTH FOR ALL

Join a diverse group of health education and health promotion professionals in Denver, Colorado as we discuss innovations, partnerships and programs that are successfully working to improve the health of all through work in their organizations, academic institutions, communities and globally. This scientific conference will expand the knowledge capital and skills of our health promotion workforce, one of the most powerful and promising investments for effective practice and research in 2016 and beyond.

2017 ANNUAL CONFERENCE SUBTHEMES

- The Intersection of Health, Innovation and Technology
- Transdisciplinary Perspectives: Moving Beyond the Silos
- Entrepreneurship, Health Education & Health Equity
- Advocacy and Capacity Building to Cultivate Health for All
- Cultivating Workforce Diversity: Transgenerational Issues and Solutions

WHO SHOULD ATTEND

All health education specialists, health communicators, K-12 health teachers, behavioral scientists, allied health professionals, university faculty and students will benefit from the opportunity to network and exchange new health education strategies, connections, and ideas from all settings of health education and health promotion.

CONFERENCE OBJECTIVES

This 2 ½ day conference will enable you to:

- Identify the skills and resources needed to be effective leaders in the dynamic field of health education and health promotion and determine strategies to align stakeholders to improve population health.
- Establish collaborative partnerships, outside of usual silos, across health education and promotion communities and increase your access to health initiatives developed through evidence-based practice.
- Explore innovative techniques using emerging technologies to meet the needs of our increasingly global environment and enhance program planning and evaluation in health communications.
- Meet the needs of priority populations, partners, and stakeholders by engaging in policy advocacy efforts related to social determinants of health to advance health equity.
- Address the challenges unique to children, adolescents, and young adults by determining best practices, systems and health policies that improve health literacy and health behaviors for a lifetime.

FOR THE LATEST NEWS, PLEASE VISIT:

MY.SOPHE.ORG/MEETINGS-EVENTS/SOPHE-ANNUAL-CONFERENCE-2017

SELECTED CONFERENCE FACULTY

SOPHE 2016-2017 PRESIDENT
DAVID A. BIRCH, PHD, MCHES
PROFESSOR AND CHAIR
Department of Health Sciences
The University of Alabama

2017 ELIZABETH FRIES HEALTH EDUCATION
AWARD RECIPIENT

JOHN P. ALLEGRANTE, PHD
PROFESSOR OF HEALTH EDUCATION
Teachers College, Columbia University

JAMES S. MARKS, MD, MPH
EXECUTIVE VICE PRESIDENT
Robert Wood Johnson Foundation

MARK J. KITTLESON, PHD, MCHES
DEAN
School of Health & Human Performance
State University of New York, Brockport

**STAY TUNED FOR DETAILS ON THE
FINAL TWO PLENARY SESSIONS**



SOPHE IS PROUD TO PARTNER WITH ETA SIGMA GAMMA (ESG), a health education honorary on college campuses.

Please join us in congratulating ESG on their 50th anniversary! Plan now to join us in Denver for an exciting celebration on Wednesday evening, March 29, 2017! Stay tuned for more details. Also plan to join ESG's events, posters and concurrent presentation. All are welcome!

#SOPHE2017  **@SOPHETWEETS**